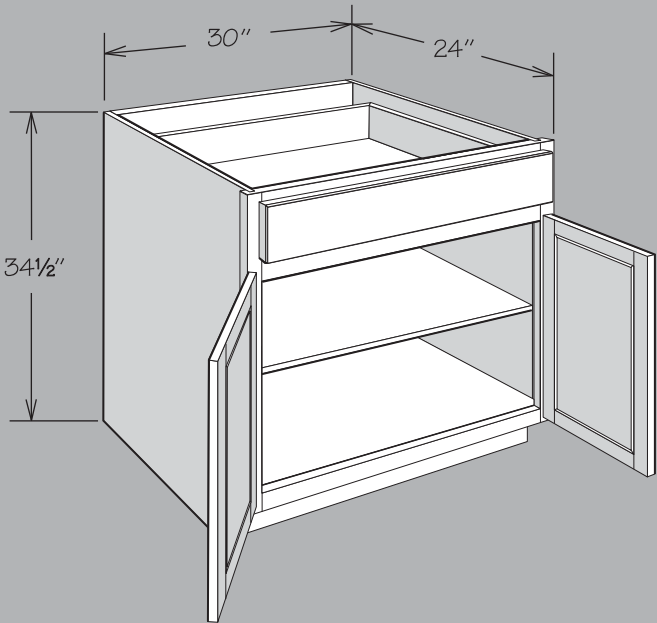


Base Cabinets



Dimensions

Width	Height	Depth
6" to 48"	34½"	24" (Reduced Depth optional on select cabinets)

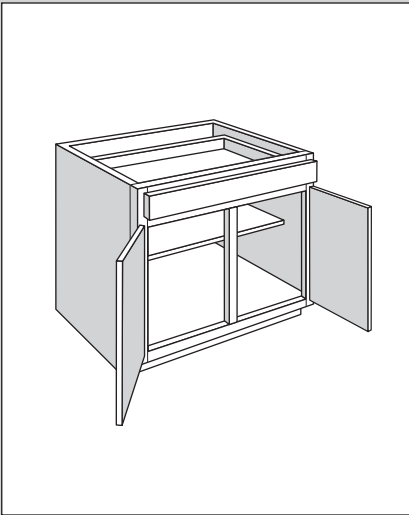
SKU Coding

B	30	BUTT
Cabinet Type (e.g., B=Base)	Width in Inches	Cabinet Type

Construction Options & Modifications

APC.....	All Plywood Construction
CFO.....	Cabinet Front Only
FE	Furniture Ends
IF	Inverted Frame
PE	Plywood Ends
RD	Reduced Depth
RTK.....	Recessed Toe Kick
VTD.....	Void Top Drawer

Standard Base Cabinets

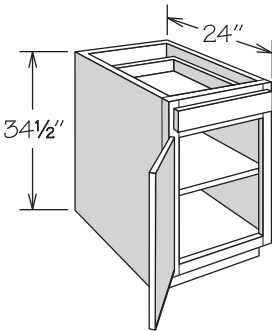


Standard Base cabinets are 34½" high by 24" deep and range from 12" to 48" wide.

Single door Standard Base cabinets are hinged left and can be reversed in the field.

Inset Toe Kick construction requires BTK8 matching toe kick - must be ordered separately.

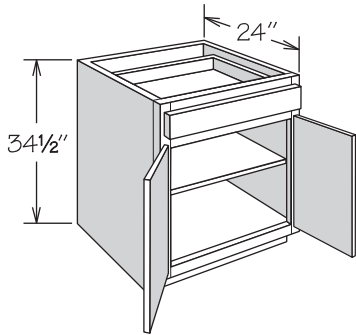
Base Cabinet
1 Door, 1 Drawer



B12 B15 B18 B21 B24	APC
	CFO
	FE
	IF
	PE
	RD
	RTK

- Full-depth adjustable shelf

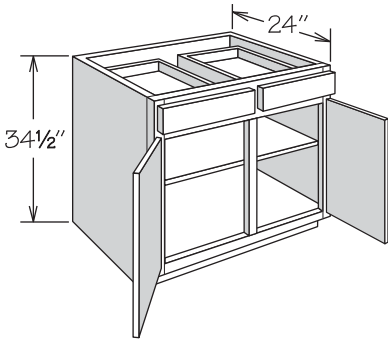
Base Cabinet
2 Butt Doors, 1 Drawer



B24 BUTT B27 BUTT B30 BUTT B33 BUTT B36 1TD BUTT	APC
	CFO
	FE
	IF
	PE
	RD
	RTK

- Full-depth adjustable shelf
- Center support for shelf provided

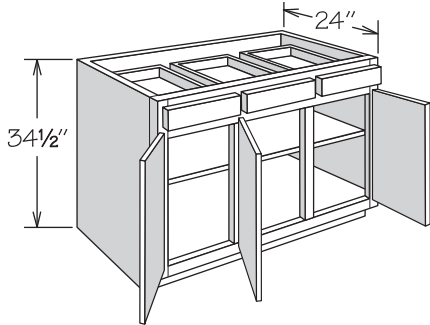
Base Cabinet
2 Doors, 2 Drawers



B36 B39 B42 B48	APC
	CFO
	FE
	IF
	PE
	RD
	RTK

- Full-depth adjustable shelf
- Center support for shelf provided

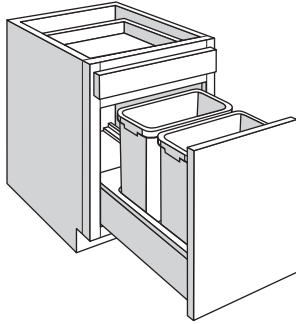
Base Cabinet
3 Doors, 3 Drawers



B45	APC
	CFO
	FE
	IF
	PE
	RD
	RTK

- Full-depth adjustable shelf
- Center support for shelf provided
- Hinged as shown - center door can be reversed in the field
- Shelf must be installed through top of cabinet and cannot be removed through door opening

Base Cabinets with Accessories



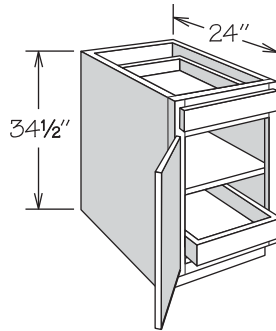
Base cabinets with accessories are 34½" high by 24" deep and range from 12" to 48" wide.

Single door Base cabinets with accessories are hinged left and can be reversed in the field.

Inset Toe Kick construction requires BTK8 matching toe kick - must be ordered separately.

Base Cabinet

1 Door, 1 Drawer
1 Deep Roll Out Tray



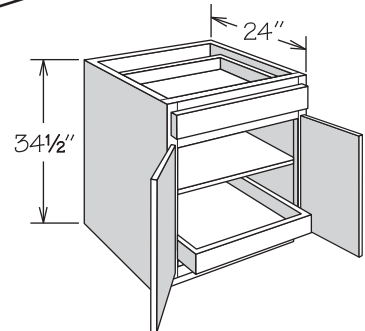
B12 FWT
B15 FWT
B18 FWT
B21 FWT
B24 FWT

APC
FE
PE
RD
RTK
VTD

- Deep Roll Out Tray (DROT) on floor
- Full-depth adjustable shelf in center position
- Deep Roll Out Tray is not adjustable

Base Cabinet

2 Butt Doors, 1 Drawer
1 Deep Roll Out Tray



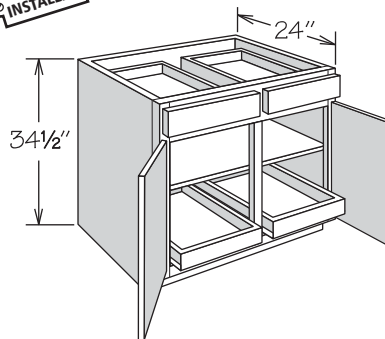
B24 FWT BUTT
B27 FWT BUTT
B30 FWT BUTT
B33 FWT BUTT
B36 1TD FWT BUTT

APC
FE
PE
RD
RTK
VTD

- Deep Roll Out Tray (DROT) on floor
- Full-depth adjustable shelf in center position
- Deep Roll Out Tray is not adjustable

Base Cabinet

2 Doors, 2 Drawers
2 Deep Roll Out Trays



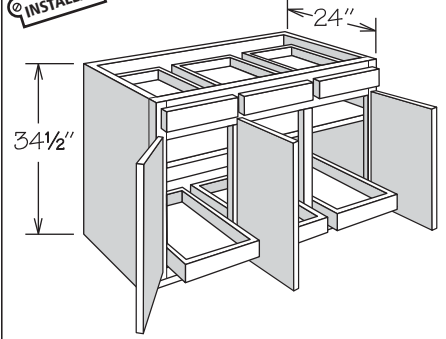
B36 2T
B39 2T
B42 2T
B48 2T

APC
FE
PE
RD
RTK
VTD

- Deep Roll Out Tray (DROT) on floor in each door opening
- Full-depth adjustable shelf in center position
- Deep Roll Out Trays are not adjustable

Base Cabinet

3 Doors, 3 Drawers
3 Deep Roll Out Trays



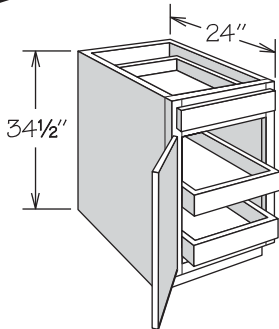
B45 3T

APC
FE
PE
RD
RTK
VTD

- Deep Roll Out Tray (DROT) on floor in each door opening
- Full-depth adjustable shelf in center position
- Deep Roll Out Trays are not adjustable
- Hinged as shown - center door can be reversed in the field
- Shelf must be installed through top of cabinet and cannot be removed through door opening

Base Cabinet

1 Door, 1 Drawer
2 Deep Roll Out Trays



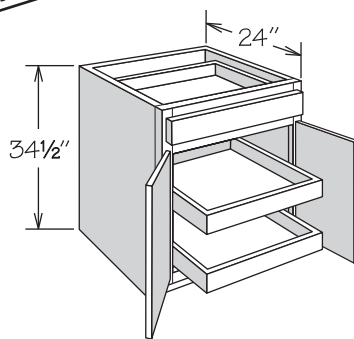
B12 2FWT
B15 2FWT
B18 2FWT
B21 2FWT
B24 2FWT

APC
FE
PE
RD
RTK
VTD

- Two Deep Roll Out Trays (DROT)
- Deep Roll Out Trays are not adjustable

Base Cabinet

2 Butt Doors, 1 Drawer
2 Deep Roll Out Trays



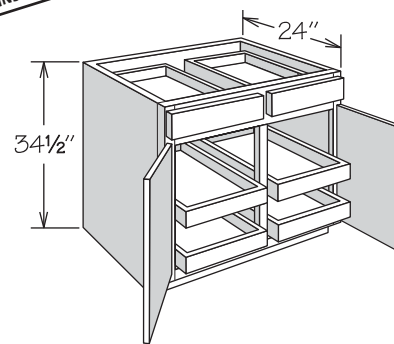
B24 2FWT BUTT
B27 2FWT BUTT
B30 2FWT BUTT
B33 2FWT BUTT
B36 1TD 2FWT BUTT

APC
FE
PE
RD
RTK
VTD

- Two Deep Roll Out Trays (DROT)
- Deep Roll Out Trays are not adjustable

Base Cabinet

2 Doors, 2 Drawers
4 Deep Roll Out Trays



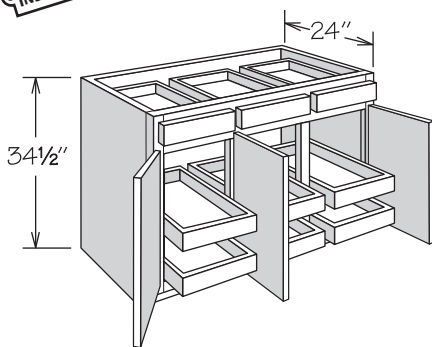
B36 4T
B39 4T
B42 4T
B48 4T

APC
FE
PE
RD
RTK
VTD

- Two Deep Roll Out Trays (DROT) in each door opening
- Deep Roll Out Trays are not adjustable

Base Cabinet

3 Doors, 3 Drawers
6 Deep Roll Out Trays



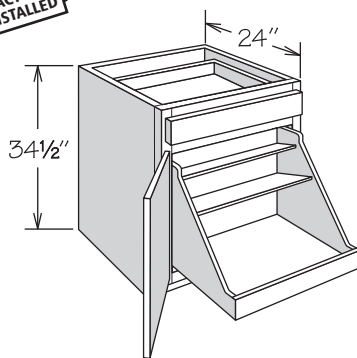
B45 6T

APC
FE
PE
RD
RTK
VTD

- Two Deep Roll Out Trays (DROT) in each door opening
- Deep Roll Out Trays are not adjustable
- Hinged as shown – center door can be reversed in the field

Base Pot & Pan Organizer Cabinet

1 Door, 1 Drawer



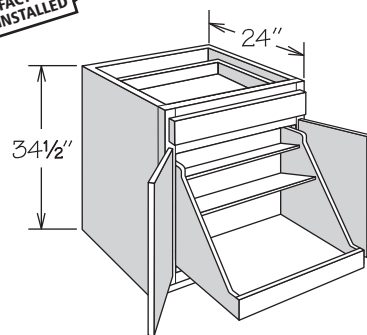
B24 BPP0

APC
FE
IF
PE
RTK
VTD

- Organizer in natural finish solid wood and wood veneer with engineered wood bottom
- Front of organizer features dovetail construction
- Top shelf measures 6 3/8" deep
- Middle shelf measures 9 3/4" deep

Base Pot & Pan Organizer Cabinet

2 Butt Doors, 1 Drawer

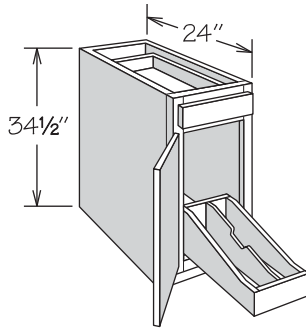


B24 BUTT BPP0
B27 BUTT BPP0
B30 BUTT BPP0
B33 BUTT BPP0
B36 1TD BUTT BPP0

APC
FE
IF
PE
RTK
VTD

- Organizer in natural finish solid wood and wood veneer with engineered wood bottom
- Front of organizer features dovetail construction
- Top shelf measures 6 3/8" deep
- Middle shelf measures 9 3/4" deep

Base Cabinet
With Factory Installed
Roll Out Tray Divider

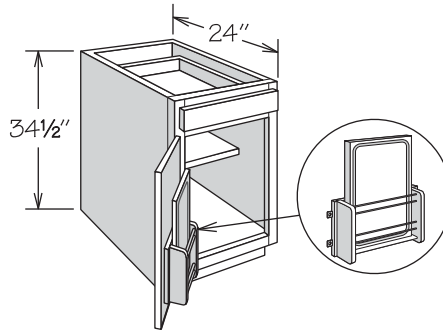


B12 ROTD
B15 ROTD

APC
FE
PE
RTK

- Roll Out Tray Divider in natural finish solid wood and wood veneer construction
- No shelf
- B12 ROTD features two compartments (one partition)
- B15 ROTD features three compartments (two partitions)
- Partition(s) are field installed

Base Cabinet
1 Door, 1 Drawer
With Cutting Board Door Rack Kit

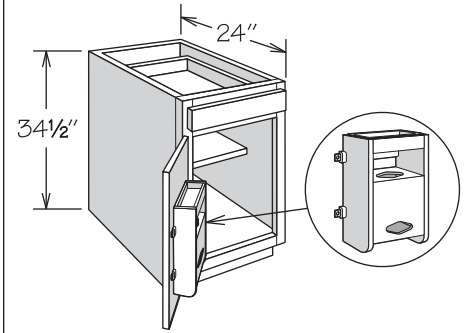


B18 CBDR

APC
FE
PE
RTK

- Cutting Board Door Rack Kit packaged separately for field installation
- Kit in natural finish solid wood features chrome rails
- Full-depth adjustable shelf must be field trimmed to half-depth
- Cannot be used with Deep Roll Out Trays
- Solid wood cutting board is NOT dishwasher safe
- Cutting board measures 15 5/8" x 10 3/4" x 1 3/8"

Base Cabinet
1 Door, 1 Drawer
With Plastic Bag Door Storage Kit

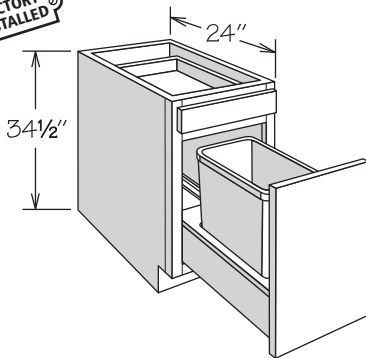


B15 PBDSU
B18 PBDSU

APC
FE
PE
RTK

- Plastic Bag Door Storage Unit packaged separately for field installation
- Unit in natural finish solid wood and wood veneer
- Full-depth adjustable shelf must be field trimmed to half-depth
- Cannot be used with Deep Roll Out Trays
- Removable white plastic tray is NOT dishwasher safe

Base Cabinet
1 Door, 1 Drawer
1 Bottom Mount Wastebasket

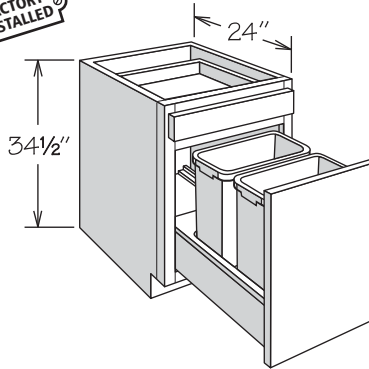


BWBB15

APC
FE
IF
PE
RTK

- Features one silver plastic 35-quart capacity bin
- Wastebasket rests in a natural finish wood frame
- Features heavy-duty 132-pound rated glides
- Decorative hardware strongly recommended

Base Cabinet
1 Door, 1 Drawer
2 Bottom Mount Wastebaskets

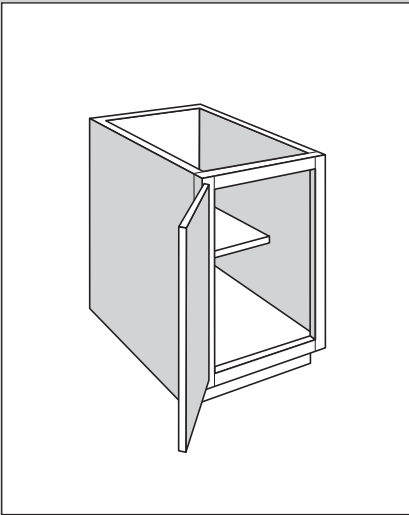


BWBB15-2
BWBB18-2
BWBB21-2

APC
FE
IF
PE
RTK

- Features two silver plastic bins:
 - BWBB15-2 is 27-quart capacity
 - BWBB18-2 and BWBB21-2 are 35-quart capacity
- Wastebaskets rest in a natural finish wood frame
- Features heavy-duty 132-pound rated glides
- Decorative hardware strongly recommended

Full-Height Base Cabinets

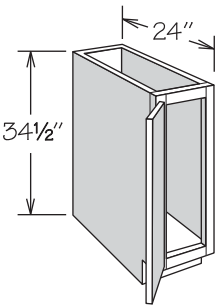


Full-Height Base Cabinets are 34½" high by 24" deep and range from 9" to 36" wide.

Single door Full-Height Base cabinets are hinged left and can be reversed in the field.

Inset Toe Kick construction requires BTK8 matching toe kick - must be ordered separately.

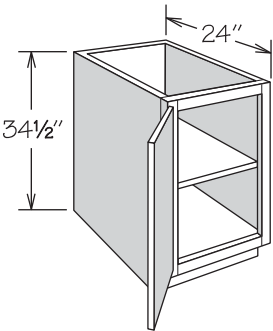
Full-Height Base Cabinet
1 Door, No Shelf



TB9	APC
	CFO
	FE
	PE
	RD
	RTK

- No shelf
- Full-height door
- For vertical tray storage
- Order S924 adjustable shelf separately
- Not available with Recessed Toe Kick Both (RTKB) Option

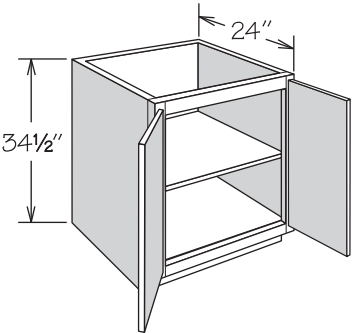
Full-Height Base Cabinet
1 Door, 1 Adjustable Shelf



B12 FH B15 FH B18 FH B21 FH	APC
	CFO
	FE
	PE
	RD
	RTK

- Full-depth adjustable shelf
- Full-height door

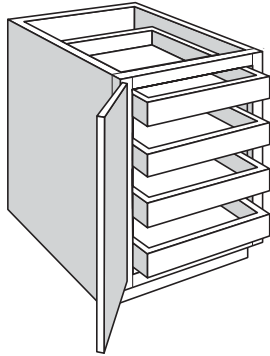
Full-Height Base Cabinet
2 Butt Doors, 1 Adjustable Shelf



B24 BUTT FH B30 BUTT FH B36 BUTT FH	APC
	CFO
	FE
	PE
	RD
	RTK

- Full-depth adjustable shelf
- Full-height doors

Full-Height Base Cabinets with Accessories

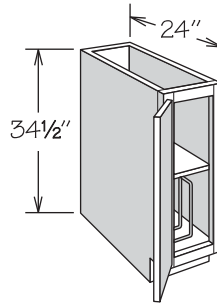


Full-Height Base cabinets with accessories are 34½" high by 24" deep and range from 9" to 30" wide.

Single door Full-Height Base cabinets are hinged left and can be reversed in the field.

Inset Toe Kick construction requires BTK8 matching toe kick - must be ordered separately.

Full-Height Base Cabinet 1 Door with Tray Divider and Shelf



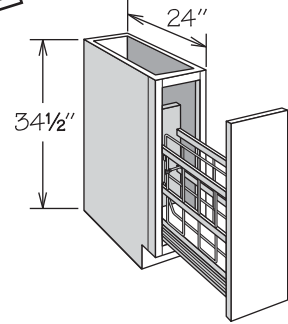
TB9 TDS

APC
FE
PE
RD
RTK

- Full-height door
- Full-depth adjustable shelf
- TD3 Cabinet Tray Divider packaged separately for field installation
- Only available with RD-23 through RD-14
- Not available with Recessed Toe Kick Both (RTKB) Option

Base Tray Divider Pull Out

FACTORY
INSTALLED



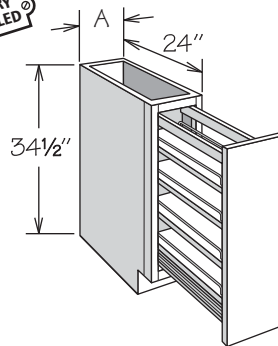
BTD9

APC
FE
PE
RTK

- Full-height door
- One fixed bottom shelf in natural finish with an adjustable chrome tray divider
- One adjustable chrome T-Bar included for storage customization
- Decorative hardware strongly recommended
- Not available with Recessed Toe Kick Both (RTKB) Option

Base Pantry Pull Out

FACTORY
INSTALLED



	A
BPP9	9"
BPP12	12"

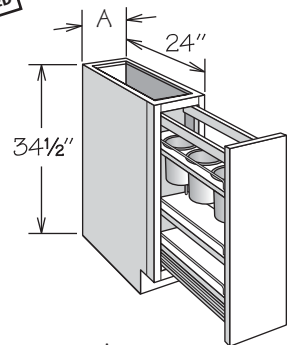
BPP9
BPP12

APC
FE
PE
RTK

- Full-height door
- One fixed bottom and three adjustable shelves in natural finish with chrome rails
- Decorative hardware strongly recommended
- BPP9 not available with Recessed Toe Kick Both (RTKB) Option

Base Pantry Pull Out Utensil Storage

FACTORY
INSTALLED



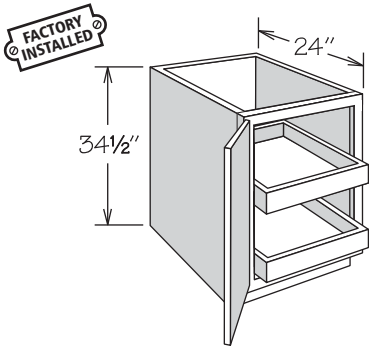
	A
BPPUS9	9"
BPPUS12	12"

BPPUS9
BPPUS12

APC
FE
PE
RTK

- Full-height door
- One fixed bottom and one adjustable lower shelf in natural finish with chrome rails
- One fixed upper shelf in natural finish with chrome rails and three stainless steel removable storage bins
- Stainless steel bins measure 5 ¼" wide by 6 ¾" deep
- Decorative hardware strongly recommended
- BPPUS9 not available with Recessed Toe Kick Both (RTKB) Option

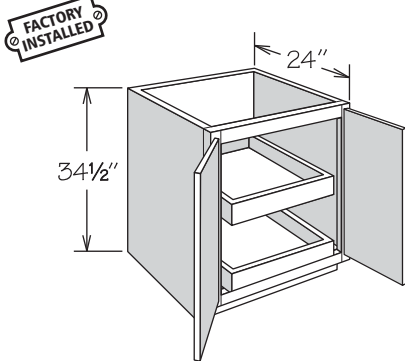
Full-Height Base Cabinet
1 Door, 2 Deep Roll Out Trays



B18 FH 2FWT	APC
	FE
	PE
	RD
	RTK

- Full-height door
- Two Deep Roll Out Trays (DROT)

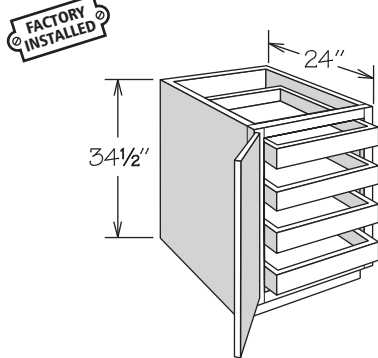
Full-Height Base Cabinet
2 Butt Doors, 2 Deep Roll Out Trays



B24 BUTT FH 2FWT B30 BUTT FH 2FWT	APC
	FE
	PE
	RD
	RTK

- Full-height doors
- Two Deep Roll Out Trays (DROT)

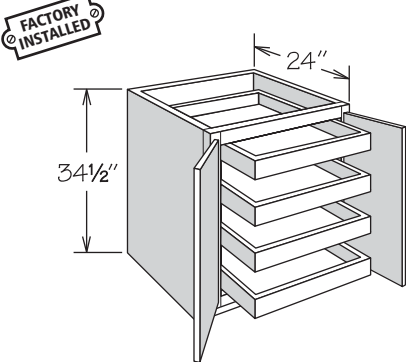
Full-Height Base Cabinet
1 Door, 4 Deep Roll Out Trays



B18 FH 4FWT	APC
	FE
	PE
	RD
	RTK

- Full-height door
- Four Deep Roll Out Trays (DROT)

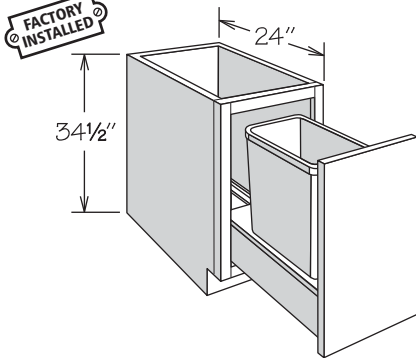
Full-Height Base Cabinet
2 Butt Doors, 4 Deep Roll Out Trays



B24 BUTT FH 4FWT B30 BUTT FH 4FWT	APC
	FE
	PE
	RD
	RTK

- Full-height doors
- Four Deep Roll Out Trays (DROT)

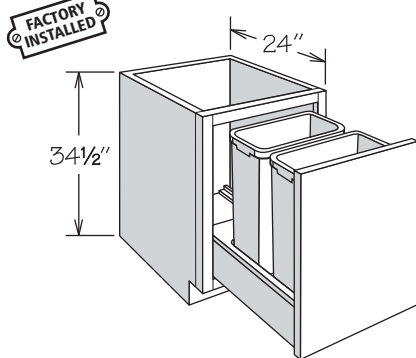
Full-Height Base Cabinet
1 Bottom Mount Wastebasket



BWBB15 FH BWBB18 FH	APC
	FE
	PE
	RTK

- Full-height door
- Features one silver plastic 50-quart capacity bin
- Wastebasket rests in a natural finish wood frame
- Features heavy-duty 132-pound rated glides
- Decorative hardware strongly recommended

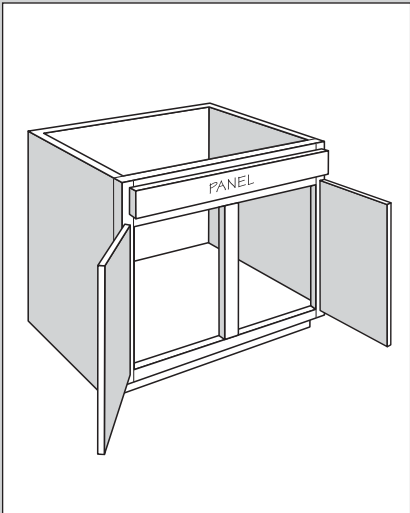
Full-Height Base Cabinet
2 Bottom Mount Wastebaskets



BWBB21-2 FH	APC
	FE
	PE
	RTK

- Full-height door
- Features two silver plastic 50-quart capacity bins
- Wastebaskets rest in a natural finish wood frame
- Features heavy-duty 132-pound rated glides
- Decorative hardware strongly recommended

Sink/Cooktop Base Cabinets



Sink/Cooktop Base cabinets are 34½" high x 24" deep and range from 18" to 48" wide.

Single door Sink/Cooktop Base cabinets are hinged left and can be reversed in the field.

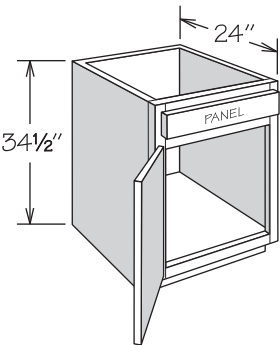
Inset Toe Kick construction requires BTK8 matching toe kick - must be ordered separately.



When placing a Sink/Cooktop Base cabinet in a design, it is recommended to select a cabinet at least 3" wider than the sink or cooktop to allow for installation clips. Review manufacturer's specifications for dimensions and adequate clearance requirements.

If a Corner Sink Base cabinet or front is selected, remember to place the dishwasher a minimum of 15" from the cabinet to allow for adequate standing space and proper appliance door operation.

Sink/Cooktop Base
1 Door, 1 Panel

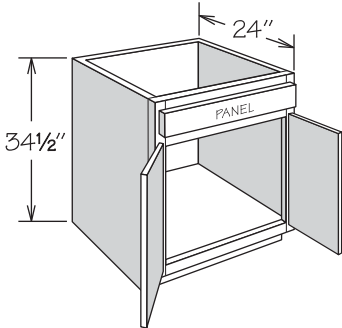


SB18
SB21
SB24

APC
FE
PE
RD
RTK

- No shelf
- Full-height back
- Subtract 1½" from width and depth for maximum available opening - removal of corner blocks may be required
- Refer to sink or appliance manufacturer's specifications for adequate clearance and required installation materials

Sink/Cooktop Base
2 Butt Doors, 1 Panel

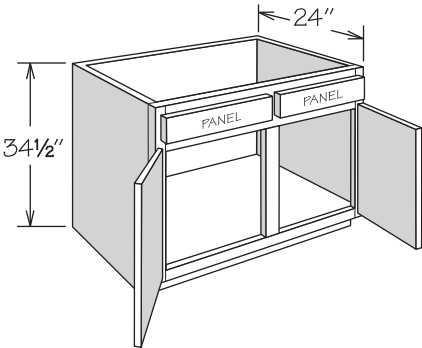


SB24 BUTT
SB27 BUTT
SB30 BUTT
SB33 BUTT
SB36 BUTT

APC
FE
PE
RD
RTK

- No shelf
- Full-height back
- Subtract 1½" from width and depth for maximum available opening - removal of corner blocks may be required
- Refer to sink or appliance manufacturer's specifications for adequate clearance and required installation materials

Sink/Cooktop Base
2 Doors, 2 Panels

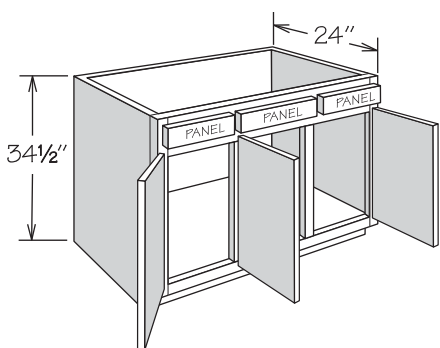


SB39
SB42
SB48

APC
FE
PE
RD
RTK

- No shelf
- Full-height back
- Subtract 1½" from width and depth for maximum available opening - removal of corner blocks may be required
- Refer to sink or appliance manufacturer's specifications for adequate clearance and required installation materials

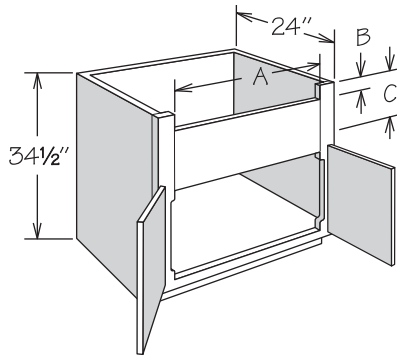
Sink/Cooktop Base
3 Doors, 3 Panels



SB45

APC
FE
PE
RD
RTK

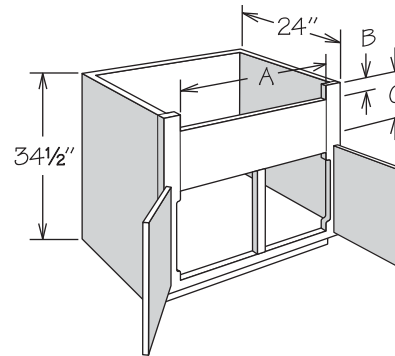
- No shelf
- Full-height back
- Subtract 1½" from width and depth for maximum available opening - removal of corner blocks may be required
- Hinged as shown - can be reversed in the field
- Refer to sink or appliance manufacturer's specifications for adequate clearance and required installation materials

**Deep Sink/Range Base Cabinet
2 Butt Doors**

Cut Out	A Min.	A Max.	B	C Max. FOL	C Max. SOL
DSB30 BUTT	23 3/4"	28"	2 7/8"	10"	10 1/2"
DSB33 BUTT	26 3/4"	31"	2 7/8"	10"	10 1/2"
DSB36 BUTT	29 3/4"	34"	2 7/8"	10"	10 1/2"

DSB30 BUTT	APC
DSB33 BUTT	FE
DSB36 BUTT	PE
	RD
	RTK

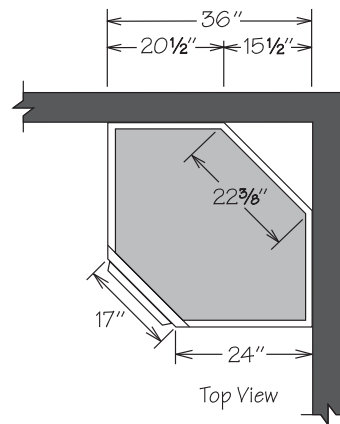
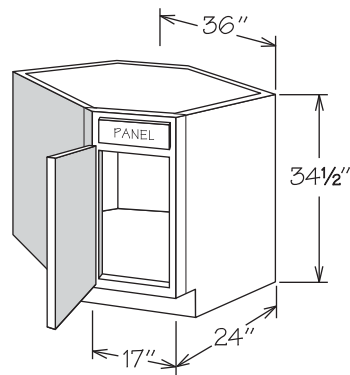
- Accommodates farm sinks
- Apron stiles are 3 3/8" wide and trimmable
- A cutout exists in the door area where the 3 3/8" stiles are routed to 1 3/8"
- Refer to sink or appliance manufacturer's specifications for adequate clearance and required installation materials

**Deep Sink/Range Base Cabinet
2 Doors**

Cut Out	A Min.	A Max.	B	C Max. FOL	C Max. SOL
DSB39	32 3/4"	37"	2 7/8"	10"	10 1/2"

DSB39	APC
	FE
	PE
	RD
	RTK

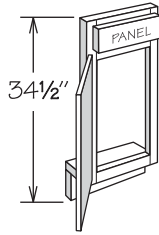
- Accommodates farm sinks
- Apron stiles are 3 3/8" wide and trimmable
- A cutout exists in the door area where the 3 3/8" stiles are routed to 1 3/8"
- Refer to sink or appliance manufacturer's specifications for adequate clearance and required installation materials

Corner Sink Base

CSB36	APC
	FE
	PE

- No shelf
- Sides are finished
- Cabinet requires a minimum of 34" to fit through doorway (removal of cabinet door recommended)
- Additional space recommended if appliance is installed on either side of this cabinet for proper appliance door operation
- Cabinet features solid top which must be field cut for sink installation as per manufacturer's specifications
- Maximum sink cut-out width is 22 3/8" if cut-out is 4" back from face of front frame
- Refer to sink manufacturer's specifications for adequate clearance and required installation materials

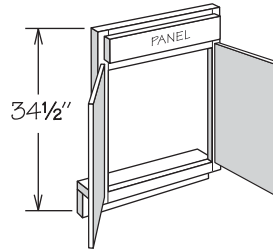
Sink/Cooktop Front
1 Door, 1 Panel



SF12
SF15
SF18
SF21
SF24

- Sink/Cooktop Front not trimmable
- Order floors and returns separately (trimming may be required) – refer to Panel Section for availability

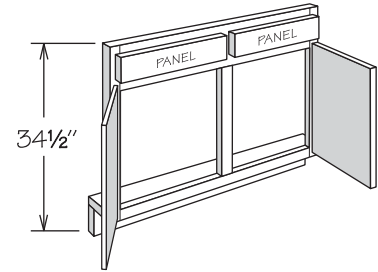
Sink/Cooktop Front
2 Butt Doors, 1 Panel



SF24 BUTT
SF27 BUTT
SF30 BUTT
SF33 BUTT
SF36 BUTT

- Sink/Cooktop Front not trimmable
- Order floors and returns separately (trimming may be required) – refer to Panel Section for availability

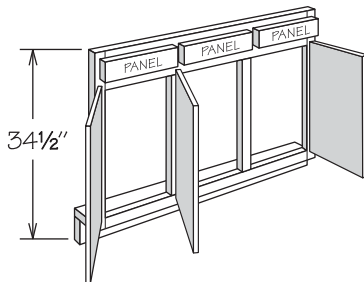
Sink/Cooktop Front
2 Doors, 2 Panels



SF39
SF42
SF48

- Sink/Cooktop Front not trimmable
- Order floors and returns separately (trimming may be required) – refer to Panel Section for availability

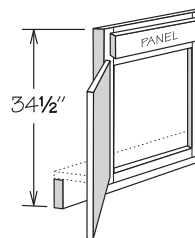
Sink/Cooktop Front
3 Doors, 3 Panels



SF45

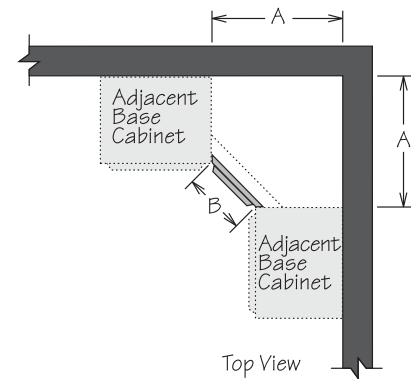
- Sink/Cooktop Front not trimmable
- Hinged as shown – can be reversed in the field
- Order floors and returns separately (trimming may be required) – refer to Panel Section for availability

Corner Sink Front



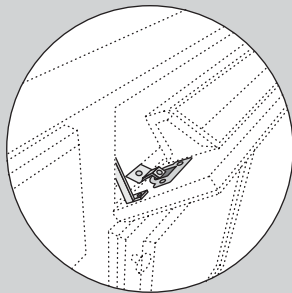
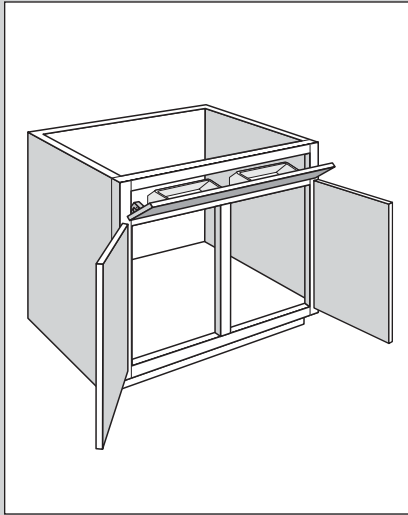
CSF36
CSF42

- Corner Sink Front not trimmable
- Vertical edges of frame are mitered to attach to adjacent cabinet frames
- Toe kick shipped loose
- Order floors and returns separately (trimming may be required) – refer to Panel Section for availability



	A	B
CSF36	35 ³ / ₃₂ "	16 ¹ / ₁₆ "
CSF42	42 ¹ / ₃₂ "	25 ⁵ / ₁₆ "

Sink Base Cabinets with Factory Installed Accessories



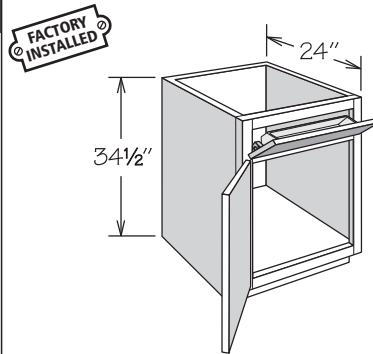
Sink Base cabinets with Factory Installed Accessories feature Tilt-Out Trays with Hidden Hinges.

Sink Base cabinets with Factory Installed Accessories are 34½" high by 24" deep and range from 18" to 48" wide.

Single door Sink Base cabinets with Factory Installed Accessories are hinged left and can be reversed in the field.

Inset toe kick construction requires BTK8 matching toe kick - must be ordered separately.

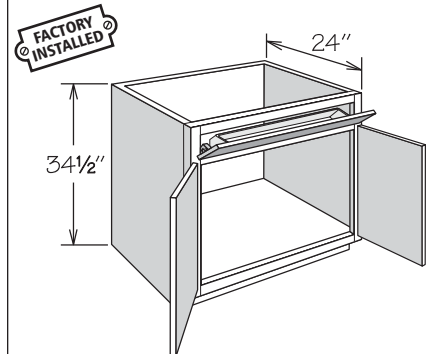
Sink Base 1 Door, 1 Panel with Factory Installed Tilt-Out Tray



Stainless	Plastic	APC
SB18 STO	SB18 TO	FE
SB21 STO	SB21 TO	PE
SB24 STO	SB24 TO	RD
		RTK

- No shelf
- Full-height back
- Subtract 1½" from width and 3¾" from depth for available sink bowl opening - removal of corner blocks may be required
- Tilt-Out Trays are NOT dishwasher safe
- Refer to sink manufacturer's specifications for adequate clearance and required installation materials

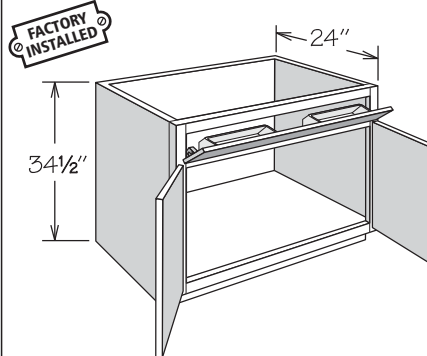
Sink Base 2 Butt Doors, 1 Panel with Factory Installed Tilt-Out Tray



Stainless	Plastic	APC
SB24 BUTT STO	SB24 BUTT TO	FE
SB27 BUTT STO	SB27 BUTT TO	PE
SB30 BUTT STO	SB30 BUTT TO	RD
		RTK

- No shelf
- Full-height back
- Subtract 1½" from width and 3¾" from depth for available sink bowl opening - removal of corner blocks may be required
- Tilt-Out Trays are NOT dishwasher safe
- Refer to sink manufacturer's specifications for adequate clearance and required installation materials

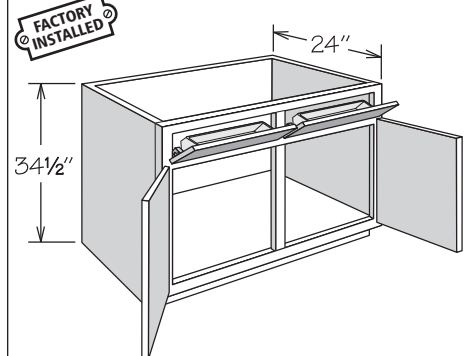
Sink Base 2 Butt Doors, 1 Panel with Factory Installed Tilt-Out Trays



Stainless	Plastic	APC
SB33 BUTT STO	SB33 BUTT TO	FE
SB36 BUTT STO	SB36 BUTT TO	PE
		RD
		RTK

- No shelf
- Full-height back
- Subtract 1½" from width and 3¾" from depth for available sink bowl opening - removal of corner blocks may be required
- Tilt-Out Trays are NOT dishwasher safe
- Refer to sink manufacturer's specifications for adequate clearance and required installation materials

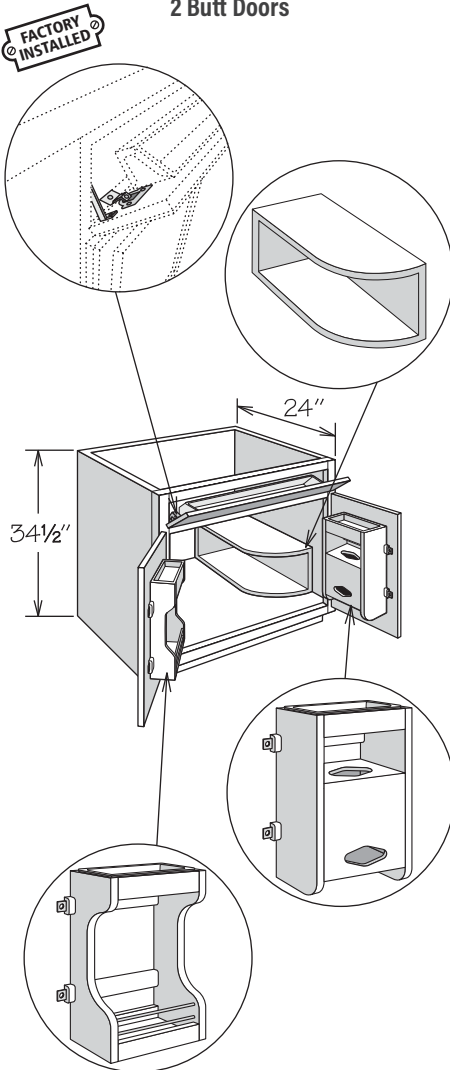
Sink Base 2 Doors, 2 Panels with Factory Installed Tilt-Out Trays



Stainless	Plastic	APC
SB39 STO	SB39 TO	FE
SB42 STO	SB42 TO	PE
SB48 STO	SB48 TO	RD
		RTK

- No shelf
- Full-height back
- Subtract 1½" from width and 3¾" from depth for available sink bowl opening - removal of corner blocks may be required
- Tilt-Out Trays are NOT dishwasher safe
- Refer to sink manufacturer's specifications for adequate clearance and required installation materials

30" Sink Base Multi-Storage Cabinet 2 Butt Doors

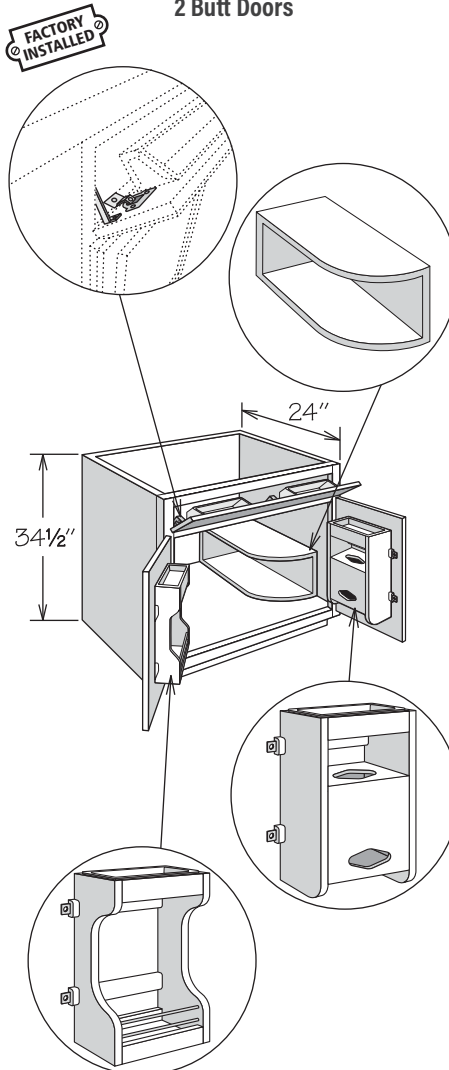


SBMS30 BUTT STO

APC
FE
PE
RTK

- Full-height back
- Features factory-installed Sink Base Door Storage Unit (SBDSU15) on left door, Plastic Bag Door Storage Unit (PBDSU15) on right door and one Stainless Tilt-Out Tray (STO TRAY 22)
- Sink Base Multi-Storage Shelf (SBMSS) shipped separately for field installation left or right
- Sink Base Multi-Storage Shelf measures 8 3/8" wide x 8" high x 17 1/2" deep
- Subtract 1 1/2" from width and 3 3/4" from depth for available sink bowl opening - removal of corner blocks may be required
- Tilt-Out Tray and Door Storage Unit Trays are NOT dishwasher safe
- Refer to sink manufacturer's specifications for adequate clearance and required installation materials

36" Sink Base Multi-Storage Cabinet 2 Butt Doors

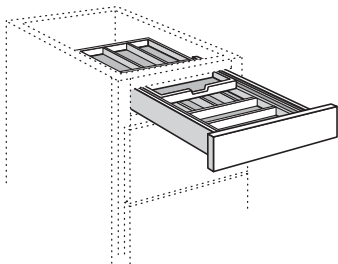


SBMS36 BUTT STO

APC
FE
PE
RTK

- Full-height back
- Features factory-installed Sink Base Door Storage Unit (SBDSU18) on left door, Plastic Bag Door Storage Unit (PBDSU18) on right door and two Stainless Tilt-Out Trays (STO TRAY 11)
- Sink Base Multi-Storage Shelf (SBMSS) shipped separately for field installation left or right
- Sink Base Multi-Storage Shelf measures 8 3/8" wide x 8" high x 17 1/2" deep
- Subtract 1 1/2" from width and 3 3/4" from depth for available sink bowl opening - removal of corner blocks may be required
- Tilt-Out Trays and Door Storage Unit Trays are NOT dishwasher safe
- Refer to sink manufacturer's specifications for adequate clearance and required installation materials

Base Cabinets with Factory Installed Drawer Accessory

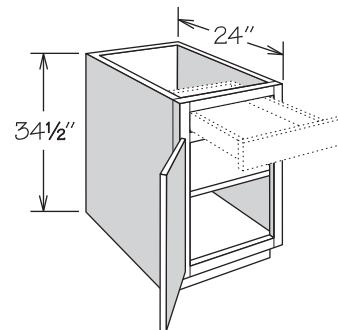


Ordering Base Cabinets with Factory Installed Drawer Accessory:

1. Select a Base cabinet configuration
Example: B15 2FWT (Base cabinet with Two Deep Roll Out Trays)
2. Choose a Factory Installed Base drawer accessory from the list on the following page
Example: Wood Tiered Cutlery Divider (WTCD)
3. Replace the asterisk (*) with the code for the Factory Installed Base drawer accessory to order as a Factory Installed Accessory
Example: B15 2FWT WTCD

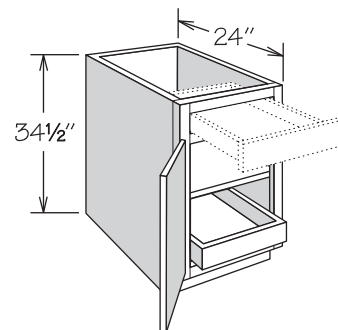
Base Cabinet Factory Installed Drawer Accessory

B15 *	APC
B18 *	FE
B21 *	PE
B24 *	RTK
B24 BUTT *	



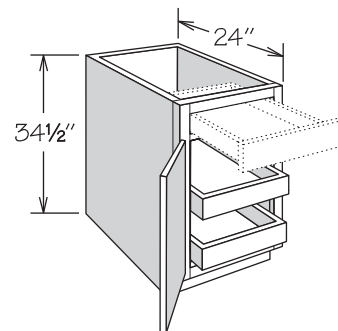
Base Cabinet With 1 Deep Roll Out Tray and Factory Installed Drawer Accessory

B15 FWT *	APC
B18 FWT *	FE
B21 FWT *	PE
B24 FWT *	RTK
B24 FWT BUTT *	



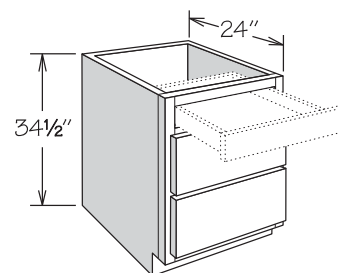
Base Cabinet With 2 Deep Roll Out Trays and Factory Installed Drawer Accessory

B15 2FWT *	APC
B18 2FWT *	FE
B21 2FWT *	PE
B24 2FWT *	RTK
B24 2FWT BUTT *	



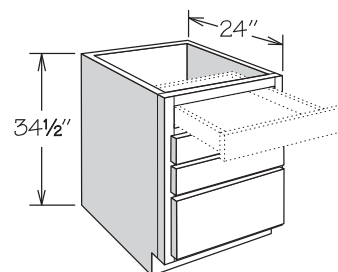
3 Drawer Base Cabinet With Factory Installed Drawer Accessory

DB15 *	APC
DB18 *	FE
DB21 *	PE
DB24 *	RTK



4 Drawer Base Cabinet With Factory Installed Drawer Accessory

DB15 4DWR *	APC
DB18 4DWR *	FE
DB21 4DWR *	PE
DB24 4DWR *	RTK

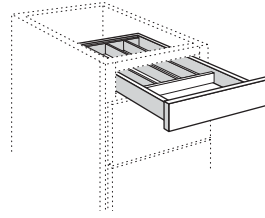


Cutlery Divider • CD

Replace * with CD to complete SKU

- Solid hardwood and plywood Cutlery Divider in natural finish

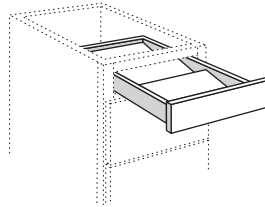
Width	Sections
15"	3
18"	4
21"	5
24"	5



Spice Drawer Insert • SDI

Replace * with SDI to complete SKU

- Solid hardwood and plywood Spice Drawer Insert in natural finish
- Accommodates most spice containers (not included)

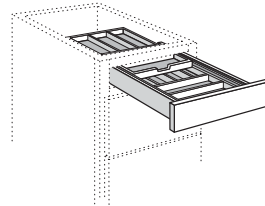


Wood Tiered Cutlery Divider • WTCD

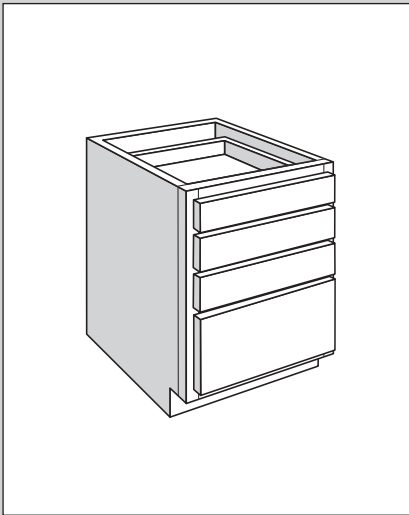
Replace * with WTCD to complete SKU

- Double-tiered cutlery divider slides independently from drawer
- Solid hardwood and plywood double-tiered cutlery divider in natural finish
- Features solid hardwood dovetail drawer in natural finish

Width	Upper Sections	Lower Sections
15"	5	5
18"	5	6
21"	6	7
24"	7	7



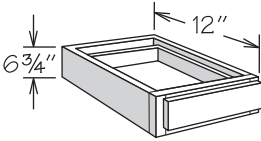
Drawer Base Cabinets



Drawer Base cabinets are 6" to 34½" high by 12" to 24" deep and range from 12" to 36" wide.

Inset toe kick construction requires BTK8 matching toe kick - must be ordered separately.

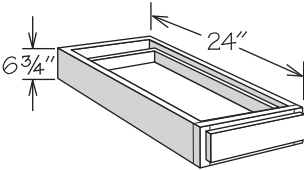
6" High Furniture
Drawer Cabinet
12" Deep



FD121206 FD151206 FD181206 FD211206 FD241206 FD271206 FD301206 FD331206 FD361206	APC
	CFO
	FE
	PE

- One standard drawer
- No toe kick
- Bottom of cabinet must be fully supported

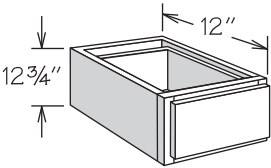
6" High Furniture
Drawer Cabinet
24" Deep



FD122406 FD152406 FD182406 FD212406 FD242406 FD272406 FD302406 FD332406 FD362406	APC
	CFO
	FE
	PE
	RD

- One standard drawer
- No toe kick
- Only available with RD-23 through RD-13
- Bottom of cabinet must be fully supported

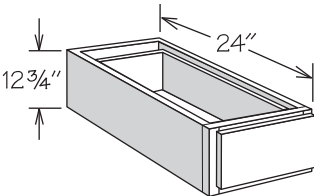
12" High Furniture
Drawer Cabinet
12" Deep



FD121212 FD151212 FD181212 FD211212 FD241212 FD271212 FD301212 FD331212 FD361212	APC
	CFO
	FE
	PE

- One large drawer
- No toe kick
- Bottom of cabinet must be fully supported

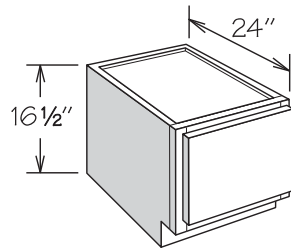
12" High Furniture
Drawer Cabinet
24" Deep



FD122412 FD152412 FD182412 FD212412 FD242412 FD272412 FD302412 FD332412 FD362412	APC
	CFO
	FE
	PE
	RD

- One large drawer
- No toe kick
- Only available with RD-23 through RD-13
- Bottom of cabinet must be fully supported

Pedestal Drawer Cabinet

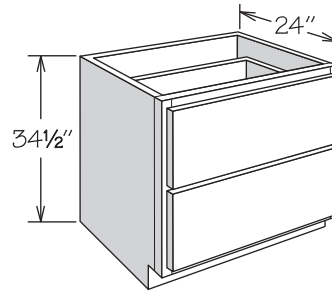


PD1217 1DWR
PD1517 1DWR
PD1817 1DWR
PD2117 1DWR
PD2417 1DWR
PD2717 1DWR
PD3017 1DWR
PD3317 1DWR
PD3617 1DWR

APC
CFO
FE
PE
RD
RTK

- One large drawer
- Cabinet features a solid top

Drawer Base Cabinet 2 Drawers

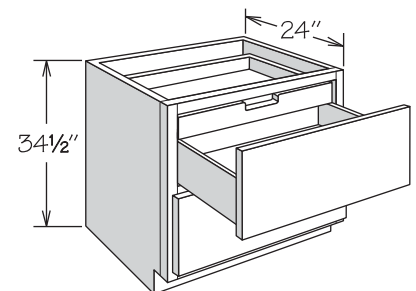


DB30 2DWR
DB36 2DWR

APC
CFO
FE
PE
RD
RTK

- Two large drawers with extra large drawer fronts
- Drawer body measures 6 5/8" deep
- Only available with RD-23 through RD-21
- Features Full-Access CushionClose heavy-duty 132-pound rated glides

Drawer Base Cabinet 2 Drawers, 1 Scalloped Deep Roll Out Tray

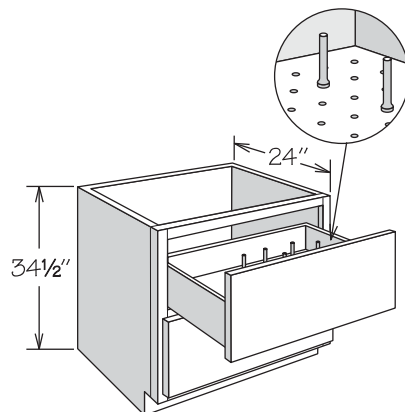


DB30 2DWR SFWT
DB36 2DWR SFWT

APC
FE
PE
RD
RTK

- Two large drawers with extra large drawer fronts
- Drawer body measures 6 5/8" deep
- Only available with RD-23 through RD-21
- Features CushionClose Scalloped Deep Roll Out Tray in top opening
- Drawers feature Full-Access CushionClose heavy-duty 132-pound rated glides

Drawer Base Cabinet 2 Drawers, 1 Peg Dish Organizer

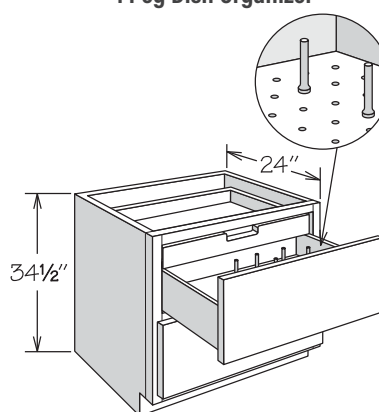


DB30 2DWR PDO
DB36 2DWR PDO

APC
FE
PE
RTK

- Two large drawers with extra large drawer fronts
- Drawer body measures 6 5/8" deep
- Features Full-Access CushionClose heavy-duty 132-pound rated glides
- One Peg Dish Organizer Kit (organizer and 12 adjustable pegs) in natural finish, packaged separately for field installation
- Additional pegs (PEG KIT 4 PK) and Peg Dish Organizer Kits (PDO_) can be ordered separately

Drawer Base Cabinet 2 Drawers, 1 Scalloped Deep Roll Out Tray, 1 Peg Dish Organizer

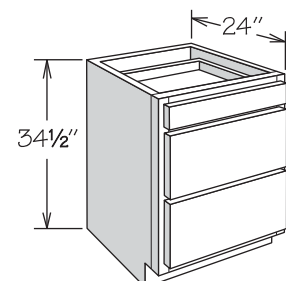


DB30 2DWR SFWT PDO
DB36 2DWR SFWT PDO

APC
FE
PE
RTK

- Two large drawers with extra large drawer fronts
- Drawer body measures 6 5/8" deep
- Features Full-Access CushionClose heavy-duty 132-pound rated glides
- Features CushionClose Scalloped Deep Roll Out Tray in top opening
- One Peg Dish Organizer Kit (organizer and 12 adjustable pegs) in natural finish, packaged separately for field installation
- Additional pegs (PEG KIT 4 PK) and Peg Dish Organizer Kits (PDO_) can be ordered separately

Drawer Base Cabinet 3 Drawers

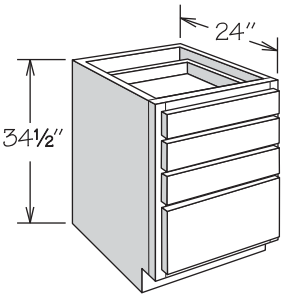


DB12 DB24
DB15 DB27
DB18 DB30
DB21 DB33
DB36 1TD

APC
CFO
FE
PE
RD
RTK
VTD

- One standard and two large drawers

Drawer Base Cabinet
4 Drawers

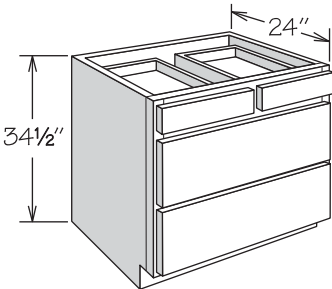


DB12 4DWR
DB15 4DWR
DB18 4DWR
DB21 4DWR
DB24 4DWR

APC
CFO
FE
PE
RD
RTK
VTD

- One large and three standard drawers

Drawer Base Cabinet
4 Drawers

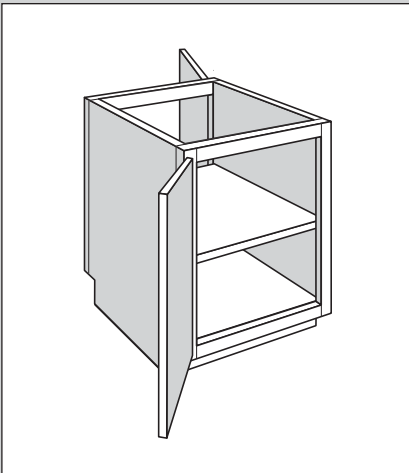


DB36

APC
CFO
FE
PE
RD
RTK
VTD

- Two standard and two large drawers

Full-Height
Peninsula Base Cabinets



Full-Height Peninsula Base cabinets are 34 1/2" high by 24" deep and range from 12" to 36" wide.

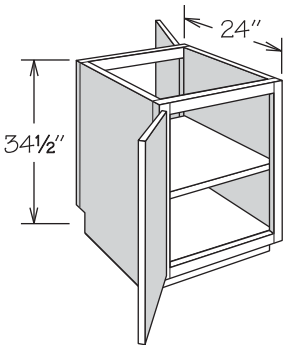
Single door Full-Height Peninsula Base cabinets are hinged left and can be reversed in the field.

Inset Toe Kick construction requires BTK8 matching toe kick - must be ordered separately.



When selecting the Recessed Toe Kick Option, the drawer side indicates the front of the cabinet in order to correctly select Recessed Toe Kick Right or Left.

Full-Height Peninsula Base
2 Doors, 1 Adjustable Shelf

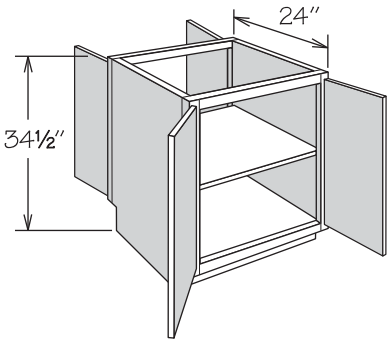


PB12 FH
PB18 FH

APC
FE
PE
RD
RTK

- Full-height doors
- One adjustable shelf

Full-Height Peninsula Base
4 Butt Doors, 1 Adjustable Shelf

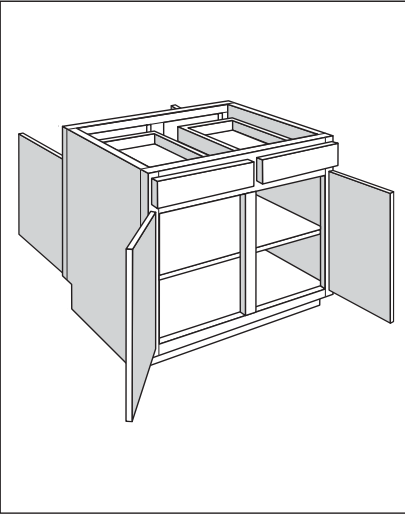


PB24 BUTT FH
PB30 BUTT FH
PB36 BUTT FH

APC
FE
PE
RD
RTK

- Full-height doors
- One adjustable shelf

Peninsula Base Cabinets



Peninsula Base cabinets are 34½" high by 24" deep and range from 12" to 42" wide.

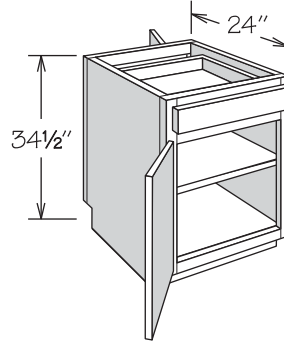
Single door Peninsula Base cabinets are hinged left and can be reversed in the field.

Inset Toe Kick construction requires BTK8 matching toe kick - must be ordered separately.



When selecting the Recessed Toe Kick Option, the drawer side indicates the front of the cabinet in order to correctly select Recessed Toe Kick Right or Left.

Peninsula Base 2 Doors, 1 Drawer

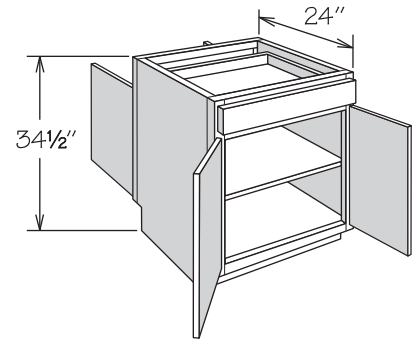


PB12
PB18
PB24

APC
FE
PE
RD
RTK
VTD

- Full-depth adjustable shelf
- Drawer accessible on one side only
- Panel on opposite side of drawer

Peninsula Base 4 Butt Doors, 1 Drawer

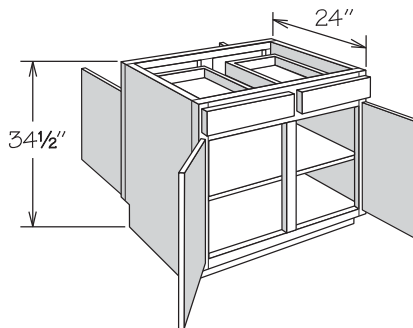


PB24 BUTT
PB30 BUTT
PB36 ITD BUTT

APC
FE
PE
RD
RTK
VTD

- Full-depth adjustable shelf
- Drawer accessible on one side only
- Panel on opposite side of drawer

Peninsula Base 4 Doors, 2 Drawers

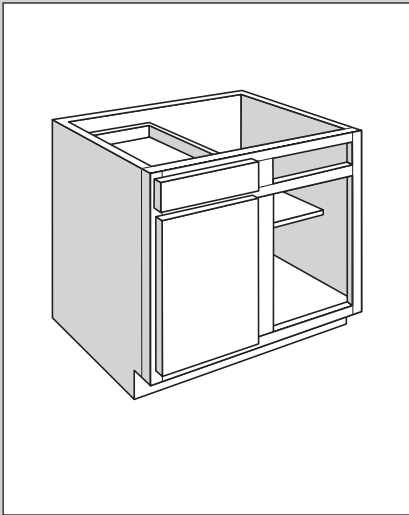


PB36
PB42

APC
FE
PE
RD
RTK
VTD

- Full-depth adjustable shelf
- Drawers accessible on one side only
- PB36 features one panel on opposite side of drawers
- PB42 features two panels on opposite side of drawers

Blind Corner Base Cabinets



Blind Corner Base cabinets are 34½" high by 24" deep. The visible width of these cabinets ranges from 13⅝" to 28" wide.

When placing a Blind Corner Base cabinet near an appliance, extra filler space may be required to clear appliance doors and handles.

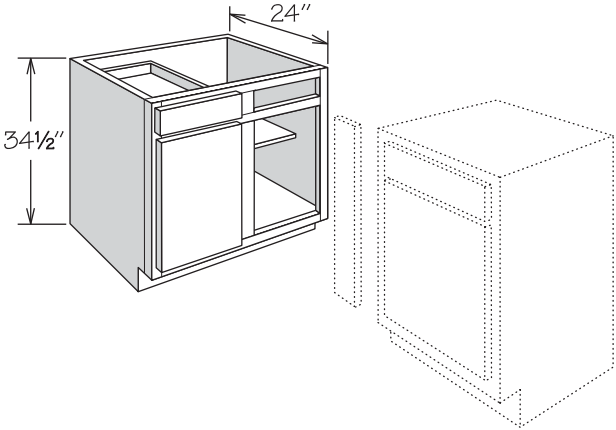
Refer to appliance manufacturers specifications for adequate clearance requirements.

Inset toe kick construction requires BTK8 matching toe kick - must be ordered separately.



When a Blind Corner Base cabinet is used in a design, remember to include the appropriate filler. For a finished, decorative look add an Overlay Filler (Full Overlay Door Styles) to Universal Fillers or Decorative Blocks to a Fluted Beaded Filler.

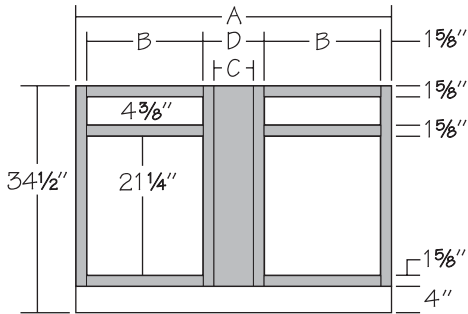
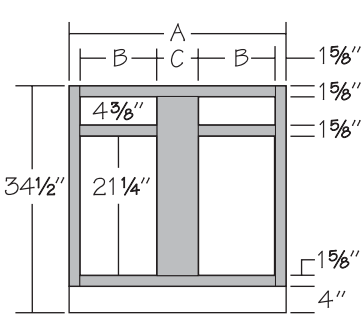
Blind Corner Base
1 Door, 1 Drawer



BLB36/39	APC
BLB39/42	CFO
BLB42/45	FE
BLB45/48	PE
BLB48/51	RD
	RTK

- Full-depth adjustable shelf
- Blind base door and drawer are installed in the left section
- Refer to the chart on following page for installation specifications
- Includes ⅝" panel to cover blind opening (field trim and install)
- Recessed Toe Kick (RTK) only available as Both (RTKB)
- Door and drawer can be reversed in the field as blind sections are identical
- Must order Universal Filler separately

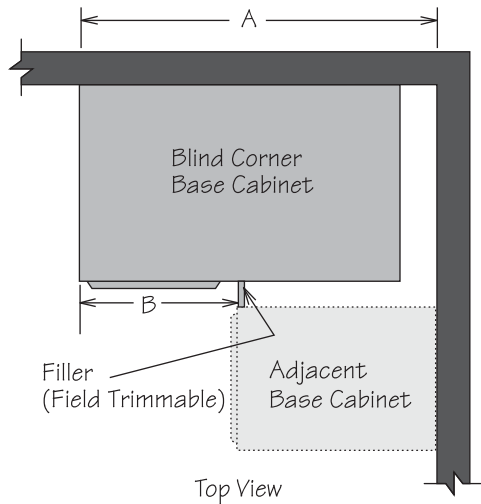
Blind Corner Base Cabinet Dimensions



Cabinet	Cabinet Width	Door Opening	C
	A	B	
BLB36/39	27"	8¾"	6¼"
BLB39/42	33"	11¾"	6¼"
BLB42/45	39"	14¾"	6¼"
BLB45/48	45"	17¾"	6¼"

Cabinet	Cabinet Width	Door Opening	C	D
	A	B	C	D
BLB48/51	48"	17¾"	6"	9¼"

Blind Corner Base Installation Chart



Full Overlay (FOL) Door Styles

Full Overlay Door Styles require decorative hardware, which has been calculated into dimensions.
*Dimension requirements do not include optional Overlay Fillers – add ½" if Overlay Fillers will be used, except for BLB48/51 add ¼".
**Additional pull may be required for appliances deeper than 24".

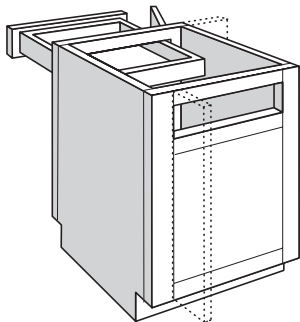
Cabinet	Actual Cabinet Width	Door Opening	Door	Wall Space A			Exposed Frame B	
				Minimum Space*	Maximum Pull**	Maximum Space	Minimum Space*	Maximum Space
BLB36/39	27"	8 ¾"	DR1224	38 ¼"	1 ¾"	40"	14 ¼"	16"
BLB39/42	33"	11 ¾"	DR1524	41 ¼"	1 ¾"	43"	17 ¼"	19"
BLB42/45	39"	14 ¾"	DR1824	44 ¼"	1 ¾"	46"	20 ¼"	22"
BLB45/48	45"	17 ¾"	DR2124	47 ¼"	1 ¾"	49"	23 ¼"	25"
BLB48/51	48"	17 ¾"	DR2124	48"	4"	52"	24"	28"

Standard Overlay (SOL) Door Styles

Wall Space A requirements include optional decorative hardware clearance.
*1¼" may be deducted if decorative hardware is not used.

Cabinet	Actual Cabinet Width	Door Opening	Door	Wall Space A			Exposed Frame B	
				Minimum Space*	Maximum Pull*	Maximum Space*	Minimum Space	Maximum Space
BLB36/39	27"	8 ¾"	DR1224	37 ¾"	2 ⅝"	40"	13 ⅝"	16"
BLB39/42	33"	11 ¾"	DR1524	40 ¾"	2 ⅝"	43"	16 ⅝"	19"
BLB42/45	39"	14 ¾"	DR1824	43 ¾"	2 ⅝"	46"	19 ⅝"	22"
BLB45/48	45"	17 ¾"	DR2124	46 ¾"	2 ⅝"	49"	22 ⅝"	25"
BLB48/51	48"	17 ¾"	DR2124	48"	4"	52"	24"	28"

Blind Peninsula Corner Base Cabinets



Blind Peninsula Corner Base cabinets are 34½" high by 24" deep.

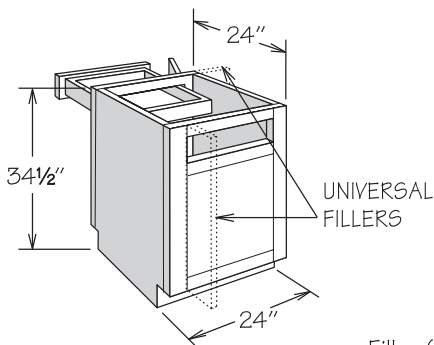
Inset toe kick construction requires BTK8 matching toe kick - must be ordered separately.



When a Blind Corner Base cabinet is used in a design, remember to include the appropriate filler. For a finished, decorative look add an Overlay Filler (Full Overlay Door Styles) to Universal Fillers or Decorative Blocks to a Fluted Beaded Filler.

When placing a Blind Corner Base cabinet near an appliance, extra filler space may be required to clear appliance doors and handles. Refer to appliance manufacturer's specifications for adequate clearance requirements.

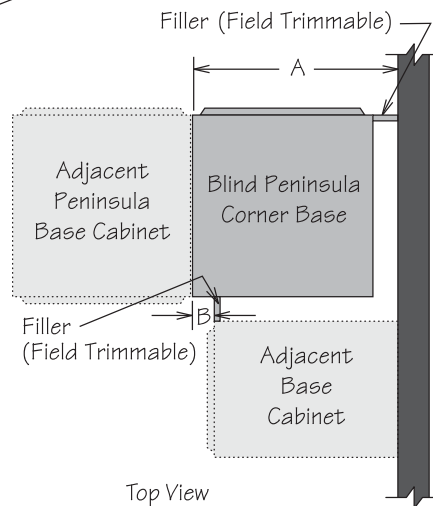
Blind Peninsula Corner Base



PBC24
PBC24 BUTT

APC
FE
PE
RD

- Full-depth adjustable shelf
- Can be installed left or right
- Universal Fillers are recommended for use between PBC24 and wall and adjoining base cabinet or appliance for hardware clearance and proper door operation
- Refer to the chart below for installation specifications
- Roll out accessories are not recommended
- Must order Universal Fillers separately



Blind Peninsula Corner Base Installation Chart

Full Overlay (FOL) Door Styles

Full Overlay door styles require decorative hardware, which has been calculated into dimensions.

*Must use these dimensions if optional Overlay Fillers will be used.

**Additional pull may be required for appliances deeper than 24".

Cabinet	Actual Cabinet Width	Door Opening	Door(s)	Wall Space A			Exposed Frame B		Filler (at wall)	
				Min. Space	Max. Pull**	Max. Space*	Min. Space	Max. Space*	Min.	Max.*
PBC24	24"	20 ¾"	DR2424	26 ¼"	¾"	27"	2 ¼"	3"	2 ¼"	3"
PBC24 BUTT	24"	20 ¾"	DR1224 BUTT (2)	26 ¼"	¾"	27"	2 ¼"	3"	2 ¼"	3"

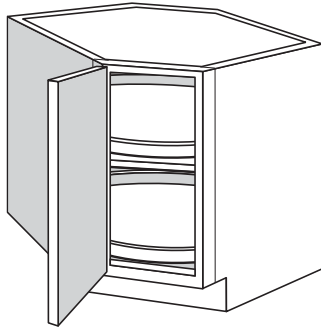
Standard Overlay (SOL) Door Styles

Wall Space A requirements include optional decorative hardware clearance.

*1¼" may be deducted if decorative hardware is not used.

Cabinet	Actual Cabinet Width	Door Opening	Door(s)	Wall Space A			Exposed Frame B		Filler (at wall)	
				Min. Space*	Max. Pull*	Max. Space*	Min. Space	Max. Space	Min.	Max.
PBC24	24"	20 ¾"	DR2424	25 ¾"	1 ½"	27"	1 ¾"	3"	1 ¾"	3"
PBC24 BUTT	24"	20 ¾"	DR1224 BUTT (2)	25 ¾"	1 ½"	27"	1 ¾"	3"	1 ¾"	3"

Corner Base Cabinets



Inset toe kick construction requires BTK8 matching toe kick - must be ordered separately.

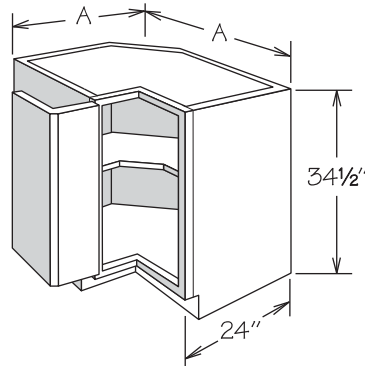
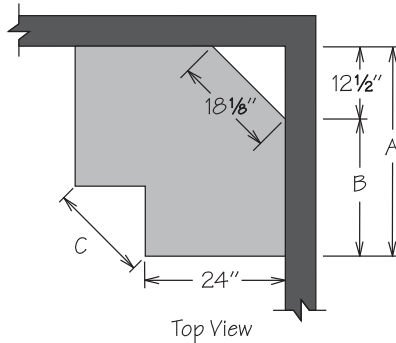
Corner Base Cabinets, excluding CAR36, require a minimum of 34" to fit through doorway (removal of cabinet door recommended).



To ensure proper door function on a Corner Base cabinet, a 3" Filler or Dishwasher Return is recommended for placement between the cabinet and any appliance or other design element deeper than 24".

In addition the Corner Base cabinet should be hinged opposite (e.g., if a range is placed to the right of a Corner Base, the cabinet should be hinged left).

Base Easy Reach

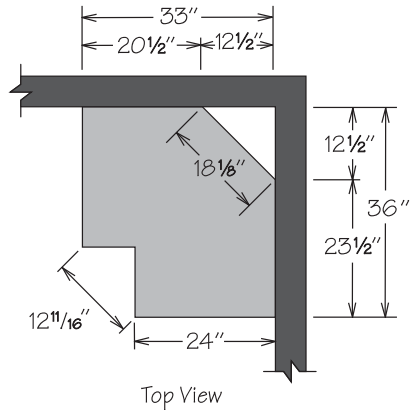


	A	B	C
BER33	33"	20 1/2"	10 1/8"
BER36	36"	23 1/2"	14 5/8"

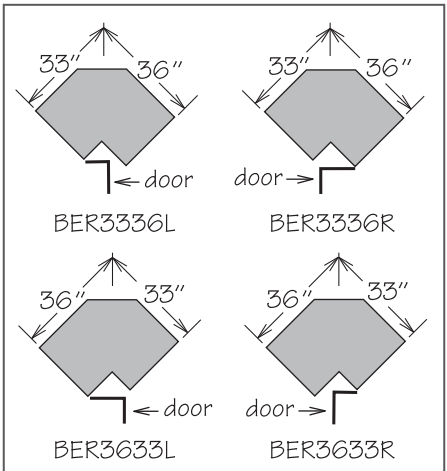
BER33L	BER36L	APC
BER33R	BER36R	FE
		PE

- One adjustable half-depth shelf (non-removable)
- All door styles must be ordered hinged left or right
- BER33 features two solid recessed panel doors for McKinley and Westfall door styles
- Sides are finished
- Doors open 170 degrees
- Cabinet requires a minimum of 34" to fit through doorway (removal of cabinet door recommended)
- Additional space recommended if appliance is installed on the hinge side of this cabinet for proper door operation
- Cabinet features solid top

Asymmetrical Base Easy Reach

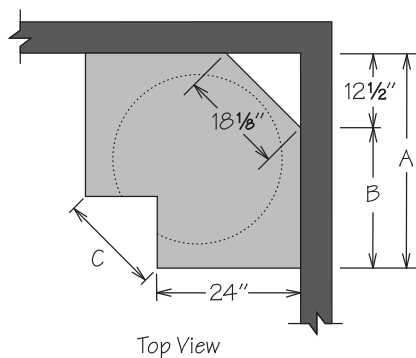


NOTE: For front view illustration, refer to Shenandoah 20-20 catalog.

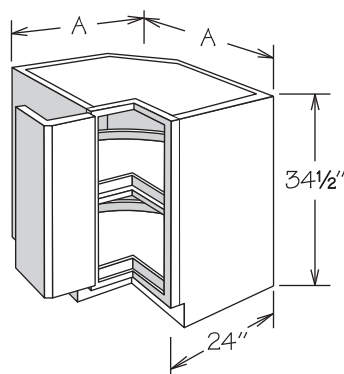


BER3336R	BER3633R	APC
BER3336L	BER3633L	FE
		PE

- One adjustable half-depth shelf (non-removable)
- All door styles must be ordered hinged left or right
- McKinley and Westfall door styles feature one solid recessed panel door (33" side) and one solid raised panel door (36" side)
- Sides are finished
- Doors open 170 degrees
- Cabinet requires a minimum of 34" to fit through doorway (removal of cabinet door recommended)
- Additional space recommended if appliance is installed on the hinge side of this cabinet for proper door operation
- Cabinet features solid top

**Base Super Susan
With Wood Spin Units**

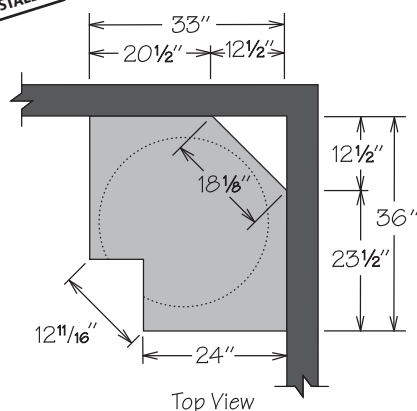
Top View



	A	B	C
BSS33 WD	33"	20 1/2"	10 7/8"
BSS36 WD	36"	23 1/2"	14 5/8"

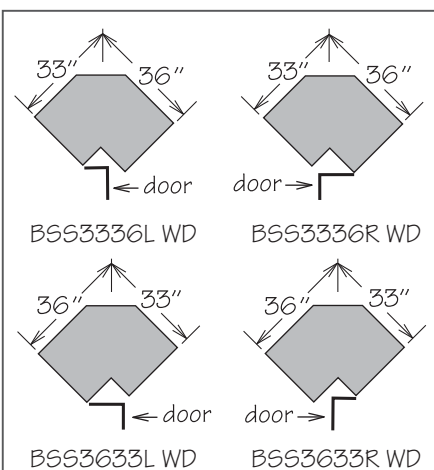
BSS33L WD	BSS36L WD	APC
BSS33R WD	BSS36R WD	FE
		PE

- Fixed wood spin unit mounted on cabinet floor
- Features one wood spin unit attached to 3/4" adjustable shelf
- Natural finish wood spin units feature 1" lip
- Wood spin diameter is 28" for BSS33 and 32" for BSS36
- All door styles must be ordered hinged left or right
- BSS33 WD features two solid recessed panel doors for McKinley and Westfall door styles
- Sides are finished
- Doors open 170 degrees
- Cabinet requires a minimum of 34" to fit through doorway (removal of cabinet door recommended)
- Additional space recommended if appliance is installed on the hinge side of this cabinet for proper door operation
- Cabinet features solid top

**Asymmetrical Base Super Susan
With Wood Spin Units**

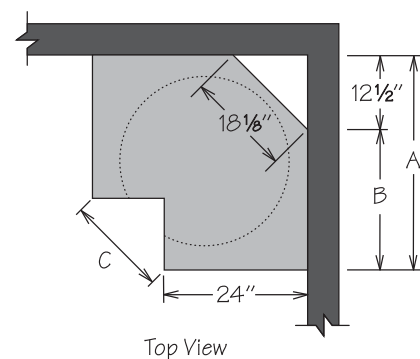
Top View

NOTE: For front view illustration, refer to Shenandoah 20-20 catalog.

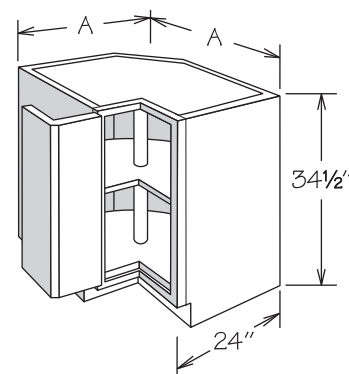


BSS3336R WD	BSS3633R WD	APC
BSS3336L WD	BSS3633L WD	FE
		PE

- Fixed wood spin unit mounted on cabinet floor
- Features one wood spin unit attached to 3/4" adjustable shelf
- Natural finish wood spin units feature 1" lip and are 28" in diameter
- All door styles must be ordered hinged left or right
- McKinley and Westfall door styles feature one solid recessed panel door (33" side) and one solid raised panel door (36" side)
- Sides are finished
- Doors open 170 degrees
- Cabinet requires a minimum of 34" to fit through doorway (removal of cabinet door recommended)
- Additional space recommended if appliance is installed on the hinge side of this cabinet for proper door operation
- Cabinet features solid top

**Base Super Susan
With Plastic Spin Shelves**

Top View

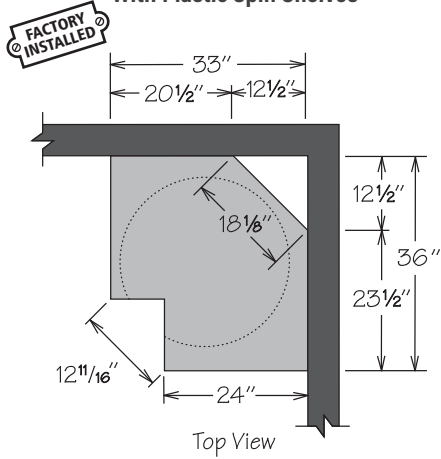


	A	B	C
BSS33	33"	20 1/2"	10 7/8"
BSS36	36"	23 1/2"	14 5/8"

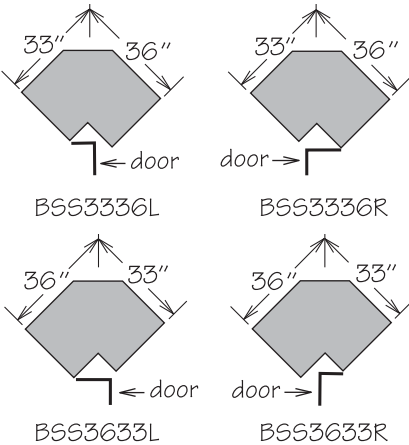
BSS33L	BSS36L	APC
BSS33R	BSS36R	FE
		PE

- BSS33 features two 28" diameter white spin shelves with pole (top shelf adjustable)
- BSS36 features two 32" diameter white spin shelves with pole (top shelf adjustable)
- All door styles must be ordered hinged left or right
- BSS33 features two solid recessed panel doors for McKinley and Westfall door styles
- Sides are finished
- Doors open 170 degrees
- Cabinet requires a minimum of 34" to fit through doorway (removal of cabinet door recommended)
- Additional space recommended if appliance is installed on the hinge side of this cabinet for proper door operation
- Cabinet features solid top

Asymmetrical Base Super Susan With Plastic Spin Shelves



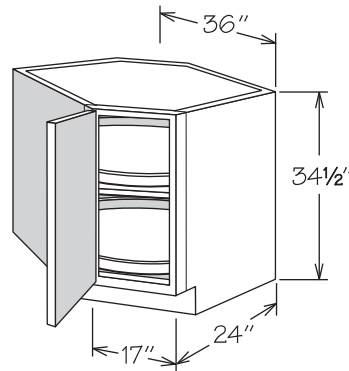
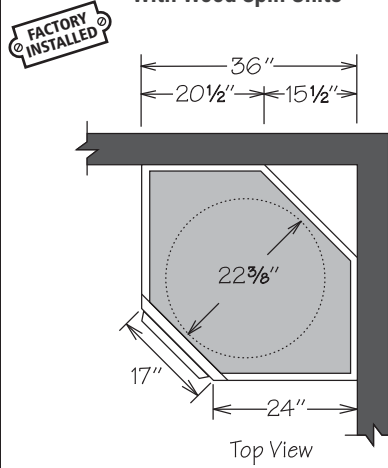
NOTE: For front view illustration, refer to Shenandoah 20-20 catalog.



BSS3336L	BSS3633L	APC
BSS3336R	BSS3633R	FE
		PE

- Features two 28" diameter white spin shelves with pole (top shelf adjustable)
- All door styles must be ordered hinged left or right
- McKinley and Westfall door styles feature one solid recessed panel door (33" side) and one solid raised panel door (36" side)
- Sides are finished
- Doors open 170 degrees
- Cabinet requires a minimum of 34" to fit through doorway (removal of cabinet door recommended)
- Additional space recommended if appliance is installed on the hinge side of this cabinet for proper door operation

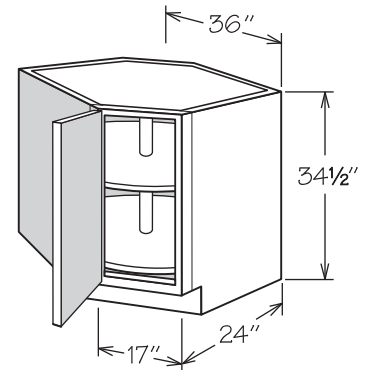
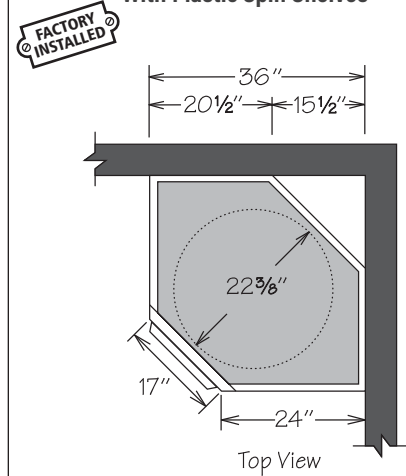
Corner Base With Wood Spin Units



CBS36 WD	APC
	FE
	PE

- Fixed wood spin unit mounted on cabinet floor
- Features one wood spin unit attached to 3/4" adjustable shelf
- Natural finish wood spin units feature 1" lip and are 28" in diameter
- Sides are finished
- Cabinet requires a minimum of 34" to fit through doorway (removal of cabinet door recommended)
- Additional space recommended if appliance is installed on the hinge side of this cabinet for proper door operation
- Cabinet features solid top

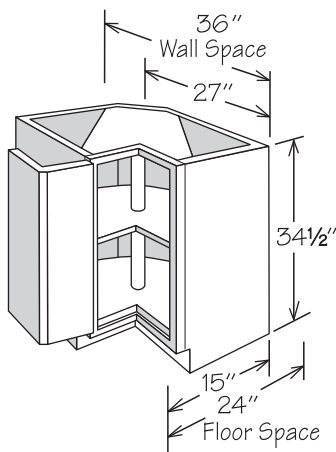
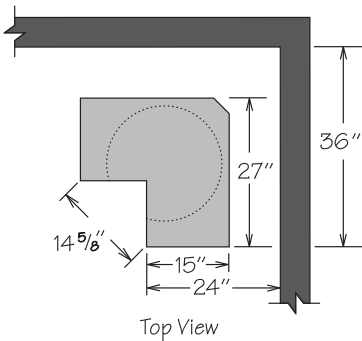
Corner Base With Plastic Spin Shelves



CBS36	APC
	FE
	PE

- Features two 28" diameter full round white spin shelves with pole (top shelf adjustable)
- Sides are finished
- Cabinet requires a minimum of 34" to fit through doorway (removal of cabinet door recommended)
- Additional space recommended if appliance is installed on the hinge side of this cabinet for proper door operation
- Cabinet features solid top

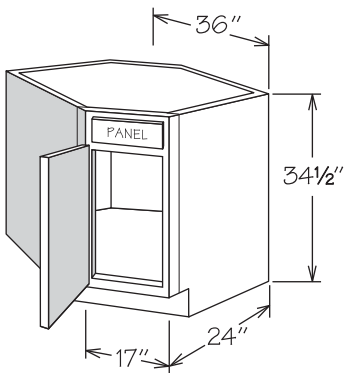
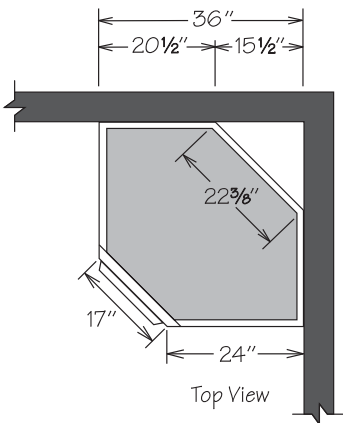
Corner Base Carousel



CAR36L CAR36L WD
CAR36R CAR36R WD

- CAR36 features two 24" diameter white spin shelves with pole (top shelf adjustable)
- CAR36 WD features two 24" diameter natural finish solid hardwood spin shelves with pole (top shelf adjustable)
- All door styles must be ordered hinged left or right
- Sides are unfinished
- Doors open 170 degrees
- If unit has an exposed side, order end panel separately
- Additional support for countertop in back is necessary
- Additional space recommended if appliance is installed on the hinge side of this cabinet for proper door operation
- Unit must be pulled to install in a 36" x 36" space

Corner Sink Base

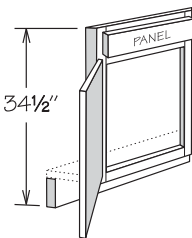
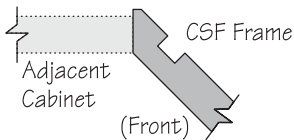
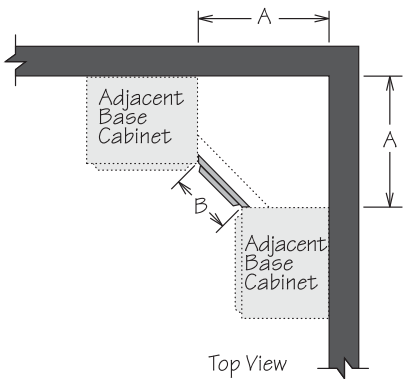


CSB36

APC
FE
PE

- No shelf
- Sides are finished
- Cabinet requires a minimum of 34" to fit through doorway (removal of cabinet door recommended)
- Additional space recommended if appliance is installed on either side of this cabinet for proper appliance door operation
- Cabinet features solid top which must be field cut for sink installation as per manufacturer's specifications
- Maximum sink-cut out width is 22 3/4" if cut-out is 4" back from face of front frame
- Refer to sink manufacturer's specifications for adequate clearance and required installation materials

Corner Sink Front

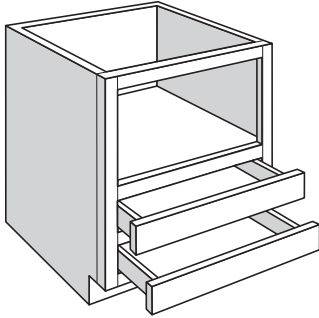


	A	B
CSF36	35 3/32"	16 5/16"
CSF42	42 3/32"	25 5/16"

CSF36
CSF42

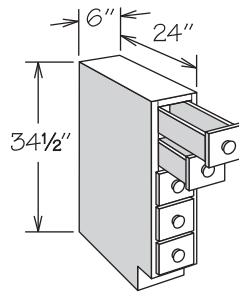
- Corner Sink Front not trimmable
- Vertical edges of frame are mitered to attach to adjacent cabinet frames
- Toe kick shipped loose
- Order floors and returns separately (trimming may be required) - refer to Panel section for availability

Specialty Base Cabinets



Inset toe kick construction requires BTK8 matching toe kick - must be ordered separately.

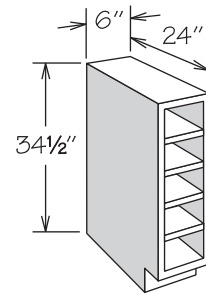
Base Spice Drawer Cabinet



BSDC6

- Drawer fronts are finished to match cabinet box exterior
- Features veneered engineered wood
- Five individual full-depth drawers
- Flush sides
- All wood drawer body with dovetail construction
- Breeze, Pewter Glaze and Linen (Duraform and Painted) finishes feature white porcelain knobs, all other finishes feature matching wood knobs

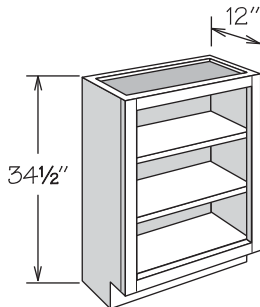
Base Wine Rack Cabinet



BWRC6

- Features veneered engineered wood finished to match cabinet box exterior
- Interior finished to match cabinet box exterior
- Accommodates five wine bottles
- Each opening measures 5" high by 4 1/2" wide
- 3/4" thick sides and shelves
- Flush sides
- Cannot be retrofitted with Base Spice Drawer Cabinet drawers

Base Bookshelf 34 1/2" High

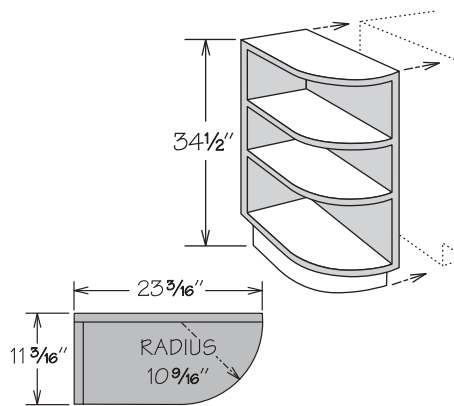


BSPLY2434

FE
ID
RD
RTK

- All Plywood Construction standard
- Interior finished to match cabinet box exterior
- Features two adjustable 3/4" plywood shelves
- Shelving packaged separately for field installation

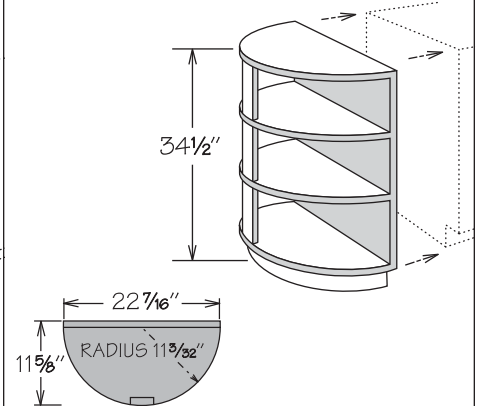
Shelf End Base



SEB

- Features veneered engineered wood finished to match cabinet box exterior
- Interior finished to match cabinet box exterior
- 3/4" shelves
- Distance between shelves is 9 3/8"
- 7/8" screw recommended from inside of adjacent cabinet for installation
- Toe kick is removable - invert unit for right or left
- Cabinet dimensions are for reference purposes ONLY - countertop must be measured and fabricated after cabinet installation

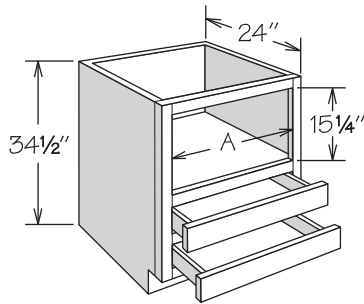
Shelf End Peninsula Base



SEPB

- Features veneered engineered wood finished to match cabinet box exterior
- Interior finished to match cabinet box exterior
- 3/4" shelves
- Distance between shelves is 9 3/8"
- 7/8" screw recommended from inside of adjacent cabinet for installation
- Cabinet dimensions are for reference purposes ONLY - countertop must be measured and fabricated after cabinet installation

Base Microwave Cabinet

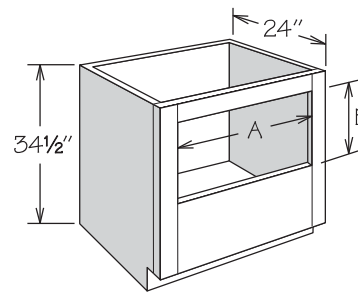


	A
BMC24	20 3/4"
BMC27	23 3/4"
BMC30	26 3/4"

BMC24	APC
BMC27	FE
BMC30	PE
	RD
	RTK

- Microwave opening finished to match cabinet box exterior
- Designed to accommodate countertop style microwave
- Features two standard depth drawers
- Accent Molding recommended – order separately
- Refer to appliance manufacturer's specifications for adequate clearances

Base Oven Cabinet Universal

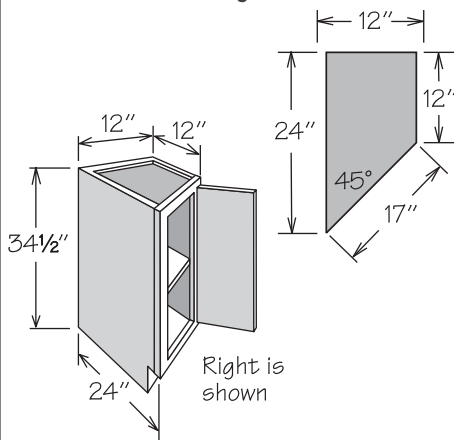


BOCU27	APC
BOCU30	FE
BOCU33	PE
	RD
	RTK

- Designed for mounting single oven below countertop
- 3" top rail is field removable and field trimmable
- 3/8" stiles
- Will accommodate certain cooktops (in conjunction with undercounter oven) or drop-in ranges
- Most ovens require a top rail of varying heights to create a finished look and to allow for the oven door to clear the countertop when opened
- Refer to appliance manufacturer's specifications for adequate clearances and required installation materials

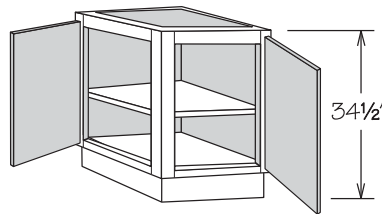
Cut Out	A Min.	A Max.	B Min.	B Max.*
BOCU27	20 3/4"	24 5/8"	18 1/4"	29"
BOCU30	23 3/4"	27 5/8"	18 1/4"	29"
BOCU33	26 3/4"	30 5/8"	18 1/4"	29"

*Trimming/removal of top rail required

Base End Angle
1 Full-Height Door

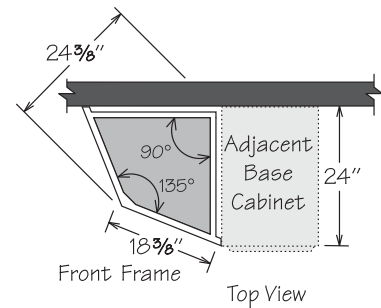
BEA12L FH	APC
BEA12R FH	FE
	PE
	RD
	RTK

- One adjustable shelf
- Must order left or right
- Recessed Toe Kick (RTK) only available on 12" side
- Only available with RD-23 through RD-18
- Cabinet dimensions are for reference purposes ONLY – countertop must be measured and fabricated after cabinet installation

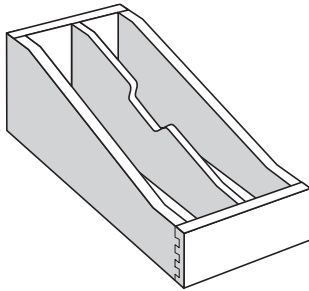
Base End Angle
2 Full-Height Doors

BEA24 FH	APC
	PE

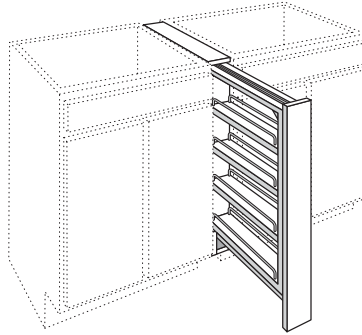
- Requires 24" x 24" space
- One adjustable shelf
- Cabinet dimensions are for reference purposes ONLY – countertop must be measured and fabricated after cabinet installation



Base Cabinet Accessories



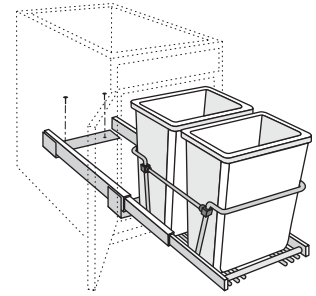
Base Filler Pull Out



BFP3

- Must be installed between two base cabinets behind the face frames in 3" of floor space
- Cannot be installed next to an appliance or at the end of a run
- No side panels or toe kick
- Filler shipped unattached for field installation
- An overlay filler is recommended for Full Overlay door styles – order separately
- One fixed and three adjustable 2 1/8" wide bottom shelves in natural finish with chrome rails
- Decorative hardware strongly recommended

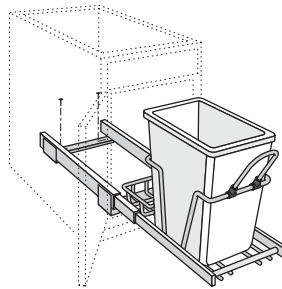
Base Recycling Kit



BR2B15

- Field installation accessory
- Features two white 27-quart plastic bins, chrome wire rack and Full-Access glides
- Mounts in B18 (14 1/4") or wider cabinet opening
- Unit measures 11 5/8" W x 19 1/4" H x 22 3/4" D
- Not sized to fit cabinets with Reduced Depth

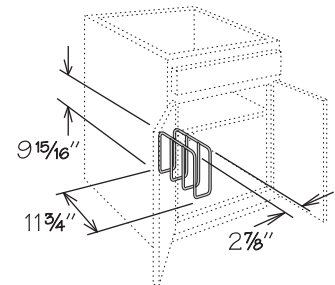
Wastebasket Unit



WBU15

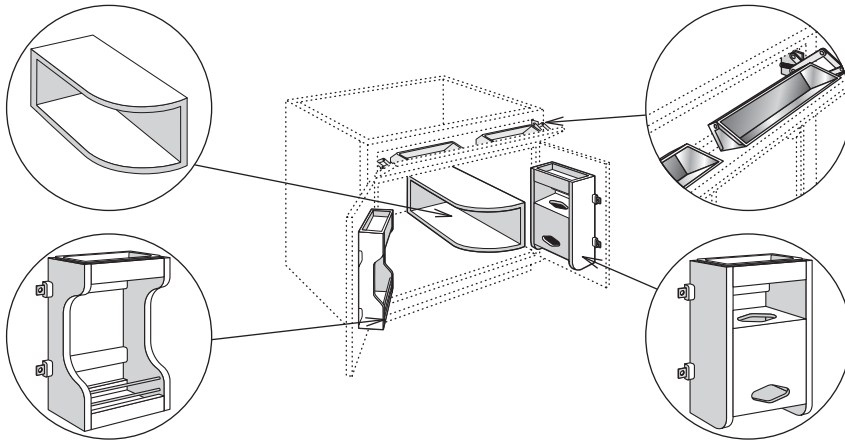
- Field installation accessory
- Features one white 35-quart plastic bin, chrome wire rack with storage bin and Full-Access glides
- Mounts in B15 (11 3/4") or wider cabinet opening
- Unit measures 10 5/8" W x 19 1/4" H x 22" D
- Not sized to fit cabinets with Reduced Depth

Cabinet Tray Divider



TD3

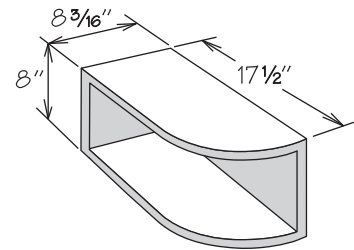
- Field installation accessory
- Chrome finish
- For use in 24" deep cabinets or cabinets with RD-23 through RD-14
- Mounting hardware included

Sink Base Multi-Storage Kit

SBMS30 KIT
SBMS36 KIT

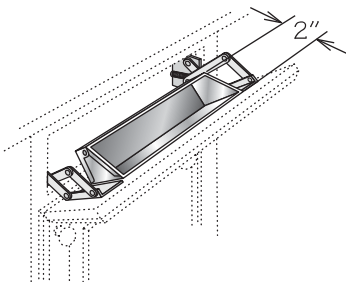
- Field installation accessory
- Not sized to fit cabinets with Reduced Depth
- Tilt-Out Trays and Door Storage Unit Trays are NOT dishwasher safe

- SBMS30 KIT for 30" sink base only and features:
 - 15" Sink Base Door Storage Unit (SBDSU15)
 - 15" Plastic Bag Door Storage Unit (PBDSU15)
 - Sink Base Multi-Storage Shelf (SBMSS)
 - One Stainless Tilt-Out Tray Kit (STO TRAY 22)
- SBMS36 KIT for 36" sink base only and features:
 - 18" Sink Base Door Storage Unit (SBDSU18)
 - 18" Plastic Bag Door Storage Unit (PBDSU18)
 - Sink Base Multi-Storage Shelf (SBMSS)
 - Two Stainless Tilt-Out Tray Kits (STO TRAY 11)

Sink Base Multi-Storage Shelf

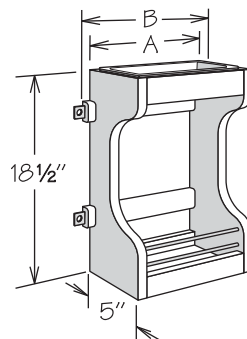
SBMSS

- Field installation accessory
- 3/4" plywood with natural finish
- Invert for left or right installation

Tilt-Out Tray Kit

Plastic:	Stainless:
TO TRAY 11	STO TRAY 11
TO TRAY 14	STO TRAY 14
TO TRAY 22	STO TRAY 22

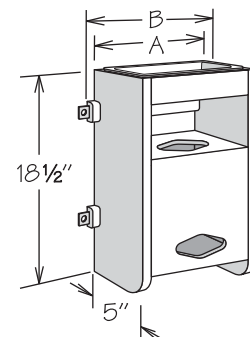
- Field installation accessory
- Kit features tray and one pair of scissor hinges
- Order trays individually
- TO TRAY 11 or STO TRAY 11:
 - Order one tray for SB18
 - Order two trays for SB33 BUTT or SB36 BUTT
- TO TRAY 14 or STO TRAY 14:
 - Order one tray for SB21, SB24, SB27 BUTT or CSF42
 - Order two trays for SB39, SB42 or SB48
- TO TRAY 22 or STO TRAY 22:
 - Order one tray for SB30 BUTT
- Cabinet Sink Fronts use same quantity of trays as Sink Base cabinets
- Tilt-Out Trays are NOT dishwasher safe

Sink Base Door Storage Unit

	A	B
SBDSU15	9"	10 1/2"
SBDSU18	10 1/2"	13 1/2"

SBDSU15
SBDSU18

- Field installation accessory
- Natural finish solid wood
- Two fixed shelves
- Cannot be used with Deep Roll Out Trays
- Full-depth shelf must be field trimmed to half-depth
- Removable white plastic tray is NOT dishwasher safe
- SBDSU15 mounts to 15" or 16" wide base doors
- SBDSU18 mounts to 18" or 19" wide base doors

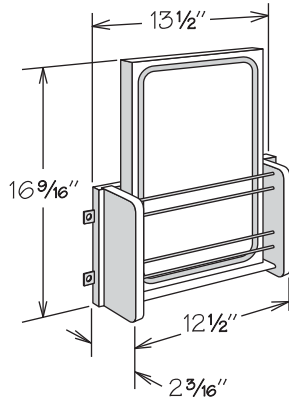
Plastic Bag Door Storage Unit

	A	B
PBDSU15	9"	10 1/2"
PBDSU18	10 1/2"	13 1/2"

PBDSU15
PBDSU18

- Field installation accessory
- Natural finish solid wood and wood veneer
- Cannot be used with Deep Roll Out Trays
- Full-depth shelf must be field trimmed to half-depth
- Removable white plastic tray is NOT dishwasher safe
- PBDSU15 mounts to 15" or 16" wide base doors
- PBDSU18 mounts to 18" or 19" wide base doors

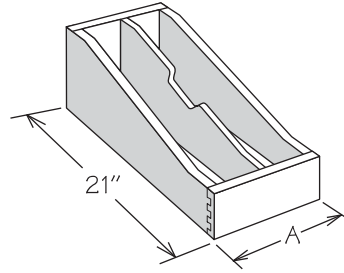
Cutting Board Door Rack Kit



CBDRK18

- Field installation accessory
- Natural finish solid wood with chrome rails
- Cannot be used with Deep Roll Out Trays
- Full-depth shelf must be field trimmed to half-depth
- Solid wood cutting board is NOT dishwasher safe
- Cutting board measures 15 5/8" x 10 3/4" x 1 3/8"
- CBDRK18 mounts to 18" or 19" wide base doors

Roll Out Tray Divider Kit

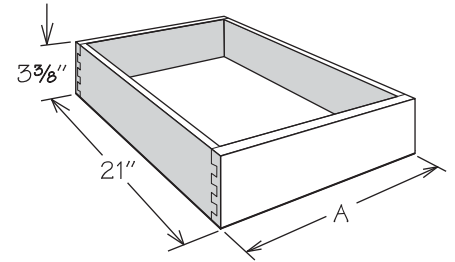


	A	Cabinet Size
ROTDK12	7 3/4"	12"
ROTDK15	10 3/4"	15"

ROTDK12
ROTDK15

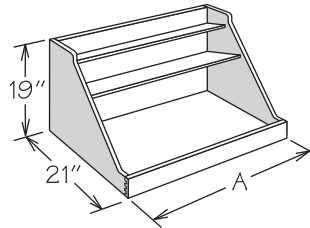
- Field installation accessory
- Natural finish solid wood and wood veneer construction
- ROTDK12 features two compartments (one partition)
- ROTDK15 features three compartments (two partitions)
- Partition(s) are field installed
- Not sized to fit cabinets with Reduced Depth
- Features natural finish solid wood and wood veneer with engineered wood bottom
- Front of organizer features dovetail construction

Deep Roll Out Tray Kit



	A	Base Cabinet Size	Oven Cabinet Size
DROT12	7 3/4"	12"	-
DROT15	10 3/4"	15"	-
DROT18	13 3/4"	18"	-
DROT19	15 1/4"	19"	-
DROT21	16 3/4"	21"	-
DROT24	19 3/4"	24"	27"
DROT27	22 3/4"	27"	30"
DROT30	25 3/4"	30"	33"
DROT33	28 3/4"	33"	-
DROT36	31 3/4"	36"	-

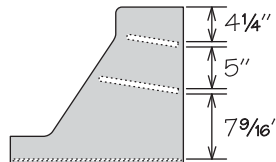
Base Pot & Pan Organizer Kit



	A	Base Cabinet Size	Oven Cabinet Size
BPPOK24	19 3/4"	24"	27"
BPPOK27	22 3/4"	27"	30"
BPPOK30	25 3/4"	30"	33"
BPPOK33	28 3/4"	33"	-
BPPOK36	31 3/4"	36"	-

BPPOK24
BPPOK27
BPPOK30
BPPOK33
BPPOK36

- Field installation accessory
- Features natural finish solid wood and wood veneer with engineered wood bottom
- Front of organizer features dovetail construction
- Top shelf measures 6 3/4" deep
- Middle shelf measures 9 3/4" deep
- Not sized to fit cabinets with Reduced Depth



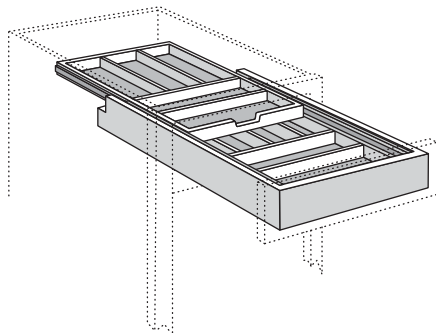
Deep Roll Out Tray Kit

DROT12
DROT15
DROT18
DROT19
DROT21
DROT24
DROT27
DROT30
DROT33
DROT36

4 Pack Deep Roll Out Tray Kit

DROT12-4K
DROT15-4K
DROT18-4K
DROT24-4K
DROT30-4K
DROT36-4K

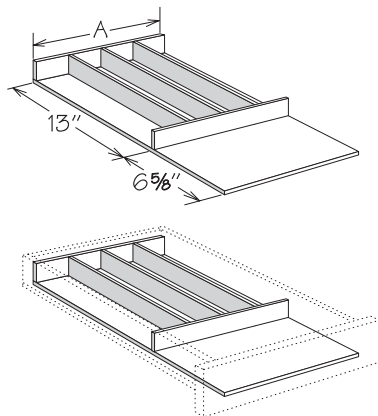
- Field installation accessory
- Natural finish dovetail drawer with engineered wood bottom
- Includes tray, all glide hardware and installation instructions
- Reduced Depth DROT will not fit in standard 21" deep Vanity or Desk Cabinets
- DROT drill template is required for all two door cabinets that have a fixed center stile – contact Customer Care for drill template

Wood Tiered Cutlery Divider Kit

	Upper Sections	Lower Sections
WTCDKFD15	5	5
WTCDKFD18	5	6
WTCDKFD21	6	7
WTCDKFD24	7	7

WTCDKFD15
WTCDKFD18
WTCDKFD21
WTCDKFD24

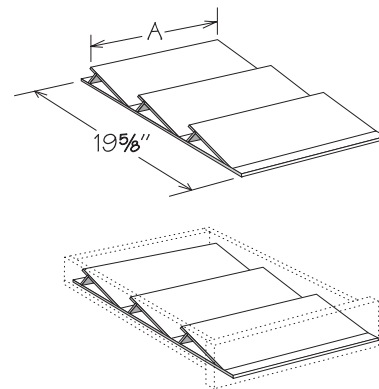
- Available as Factory Installed for all door styles
- Field installed accessory replaces existing drawer box
- Glides are not included: reuse existing drawer glides
- Solid hardwood and plywood in natural finish
- Double tiered cutlery divider slides independently from drawer
- Can be installed in cabinets with single drawer or side-by-side drawer configurations
- Not sized to fit cabinets with Reduced Depth
- Not field trimmable
- Sized to fit 6" H x 24" D Furniture Drawer Cabinets

Cutlery Divider Kit

	Number of Sections	A
CAK15	3	9 3/4"
CAK18	4	12 3/4"
CAK21	5	15 3/4"
CAK24	5	18 3/4"

CAK15
CAK18
CAK21
CAK24

- Available as Factory Installed for all door styles
- Field installation accessory
- Solid hardwood and plywood in natural finish
- Not sized to fit cabinets with Reduced Depth
- Not field trimmable
- Sized to fit 6" H x 24" D Furniture Drawer Cabinets

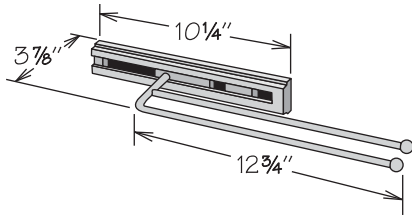
Spice Drawer Insert Kit

	A
SDIAK15	9 3/4"
SDIAK18	12 3/4"
SDIAK21	15 3/4"
SDIAK24	18 3/4"

SDIAK15
SDIAK18
SDIAK21
SDIAK24

- Available as Factory Installed for all door styles
- Field installation accessory
- Solid hardwood and plywood in natural finish
- Accommodates most spice containers (not included)
- Not sized to fit cabinets with Reduced Depth
- Not field trimmable
- Sized to fit 6" H x 24" D Furniture Drawer Cabinets

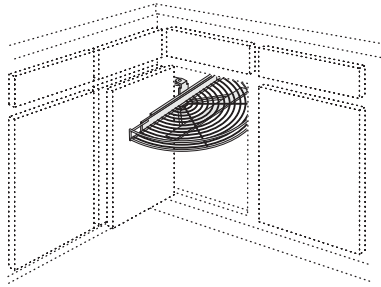
Sliding Towel Bar



STB

- Field installation accessory
- Two chrome finish towel bars
- Mounts to cabinet side panel
- Pulls out 7" for easy access
- For use in 24" deep cabinets or cabinets with RD-23 through RD-14

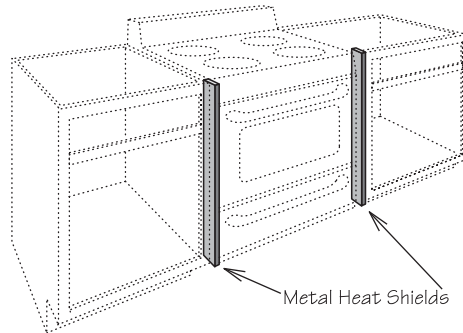
Corner Lazy Susan



CLS45F

- Field installation accessory
- One 2½" high chrome wire shelf per unit
- For use with BLB45/48 or BLB48/51
- More than one unit can be installed
- Order units individually
- 34" long x 16" deep from center
- Attaches to back of face frame
- Not sized to fit cabinets with Reduced Depth

Heat Shield Kit



HSK

- Field installation accessory
- For use as heat shield on Duraform thermofoil door styles:
 - Cottage
 - Sydney
 - Edgeworth
 - Winchester
 - Solana
- Protects doors and drawer fronts from adjacent heat source (built-in ovens, under counter ovens, drop-in or free-standing ranges)
- Kit features:
 - Two ⅝" metal heat shields finished to match cabinet box exterior
 - One strip of QM8 WD molding shield finished to match cabinet box exterior